

FreeCol Documentation  
User Guide for Version v0.8.0

The FreeCol Team

May 11, 2009



# Contents

<b>1</b>	<b>Introduction</b>	<b>5</b>
1.1	About FreeCol . . . . .	5
1.2	The Original Colonization . . . . .	6
<b>2</b>	<b>Installation</b>	<b>9</b>
2.1	System Requirements . . . . .	9
2.2	Compiling FreeCol . . . . .	10
<b>3</b>	<b>Interface</b>	<b>11</b>
3.1	Starting the game . . . . .	11
3.1.1	Command line options . . . . .	11
3.1.2	Game setup . . . . .	13
3.1.3	Game options . . . . .	14
3.2	Client options . . . . .	15
3.2.1	Display Options . . . . .	15
3.2.2	Message Options . . . . .	17
3.2.3	Audio Options . . . . .	18
3.2.4	Savegame Options . . . . .	18
3.2.5	Warehouse Options . . . . .	19
3.2.6	Keyboard Accelerators . . . . .	19
3.2.7	Other Options . . . . .	19
3.3	The main screen . . . . .	19
3.3.1	The Menubar . . . . .	20
3.3.2	The Info Panel . . . . .	25
3.3.3	The Minimap . . . . .	25
3.3.4	The Unit Buttons . . . . .	25
3.3.5	The Compass Rose . . . . .	26
3.3.6	The Main Map . . . . .	26

3.4	The Europe Panel . . . . .	31
3.5	The Colony panel . . . . .	32
3.5.1	The Warehouse Dialog . . . . .	35
<b>4</b>	<b>The New World</b>	<b>37</b>
4.1	Terrain Types . . . . .	37
4.2	Goods . . . . .	38
4.2.1	Trade Routes . . . . .	40
4.3	Special Resources . . . . .	40
4.4	Native Settlements . . . . .	40
4.5	Lost City Rumours . . . . .	42
4.6	Exploration . . . . .	42
<b>5</b>	<b>Colonies</b>	<b>43</b>
5.1	Picking a suitable site . . . . .	43
5.1.1	The colony tile . . . . .	43
5.1.2	The adjacent tiles . . . . .	44
5.1.3	No Reforestation . . . . .	44
5.1.4	Government Efficiency . . . . .	44
5.2	Colony Buildings . . . . .	45
5.3	Using Buildings . . . . .	48
5.4	Building Units and Buildings . . . . .	48
<b>6</b>	<b>Your Home Country</b>	<b>49</b>
6.1	Your Home Port . . . . .	51
6.2	Your Monarch . . . . .	51
<b>7</b>	<b>Units</b>	<b>53</b>
7.1	Equipment . . . . .	56
7.2	Skills and Education . . . . .	57
7.3	Combat . . . . .	58
7.3.1	Combat Bonuses and Penalties . . . . .	59
<b>8</b>	<b>The Continental Congress</b>	<b>61</b>
<b>9</b>	<b>The Birth of a Nation</b>	<b>65</b>
9.1	Sons of Liberty . . . . .	65
9.2	The Declaration of Independence . . . . .	65

<i>CONTENTS</i>	5
<b>10 Changing the Rules</b>	<b>67</b>
10.1 Modifiers and Abilities . . . . .	68
<b>11 Known bugs</b>	<b>81</b>
<b>12 Copyright Notice</b>	<b>83</b>



# Chapter 1

## Introduction

Welcome to FreeCol! If you're interested in development of this program, please see the [FreeCol web site](#). This is a draft version of the user's guide. You can find the latest version at the [FreeCol homepage](#).

### 1.1 About FreeCol

The FreeCol team aims to create an Open Source version of Colonization (released under the [GPL](#)). At first we'll try to make an exact clone of Colonization. The visuals will be brought up to date with more recent standards but will remain clean, simple and functional. Certain new 'features' will be implemented but the gameplay and the rules will be exactly the same as the original game. Examples of modern features are: an isometric map and multiplayer support.

This clone will be developed incrementally and result in **FreeCol 1.0.0 which will be an almost exact Colonization clone**. Incremental development basically means that we'll add features one at a time. This allows us to have a running program at all times and also to release an unfinished but working game once in a while.

Once FreeCol 1.0.0 is finished we'll start working towards FreeCol 2.0.0. **FreeCol 2 will go beyond the original Colonization** and will have many new features, it will be an implementation of our (and our users') image of what Colonization 2 would have been.

## 1.2 The Original Colonization

The original Colonization<sup>W</sup> was released in 1994 by Microprose. **Colonization is heavily based on Civilization** which some consider to be the best turn-based strategy game for the PC in the history of mankind.

In Civilization the object of the game was to build a nation that could stand the test of times and that could also do one of the following: conquer the world or be the first to launch a spaceship. In Colonization things are bit different...

A Colonization game starts in 1492 and **the object of the game is to colonize America**. You begin the game with one vessel and two colonists.

As in Civilization you need to build a powerful nation, but fortunately in the early part of the game **you'll be able to send ships back to Europe** in order to sell the goods you've produced or to bring back some colonists. **Getting colonists into the new world is a very important aspect of the game** as one game turn takes one year and later on even one season and as a result colonies don't grow as rapidly as they do in Civilization. You can pay colonists to come to the new world or you can show off with the religious freedom of your people in which case they will hop on your vessels for no money at all.

Another important aspect is **trade: the source of all income** (apart from Inca and Aztec gold). In a land filled with precious resources it is important to **build your colonies at the right location** and to place craftsmen where they belong. This is not only to have an income but also to be able to **live off the land** when you can no longer count on the support of Europe.

Through all this you'll have to decide whether or not you want to **live next to the native americans** peacefully. They can teach your colonists new skills that cannot be taught anywhere else and they will offer you goods in case you choose to treat them as your friends. On the other hand, their villages can be attacked and their valuable goods can be taken from them and sold in Europe.

**Other European forces are also busy occupying their piece of the new world.** Should their borders go too far then take over some of their colonies by force because they wouldn't hesitate to do the same thing to you.

The object of Colonization is to **declare your independence and survive an attack of the King's forces**. Before declaring your independence



**you need to have the majority of the people behind you.** This can be done by **promoting free speech** and by providing a strong governmental system.



# Chapter 2

## Installation

You can download a system independent installer, which should install FreeCol and set up the required shortcuts on your desktop. If everything works as planned, you will only need to double click the icon in order to start the game. If this is not the case, then please read the following paragraphs.

### 2.1 System Requirements

FreeCol is written in Java. In order to run, it requires a Java Virtual Machine. In theory, FreeCol should run on any platform on which a Java Virtual Machine compatible with Sun Java 5 or higher is available. In practice, however, things are less clear cut.

FreeCol is known to work with Sun's Java 5 and 6 (which you can get [here](#)). FreeCol also works with OpenJDK, although some problems and graphics glitches remain. FreeCol is known to run on recent versions of Windows and Linux, and on MacOSX to some extent. If you are using Linux, using Java 6 is recommended, as its font rendering is much better. If you are using FreeCol on a different platform, we would like to hear about it.

FreeCol requires at least 128 MB memory and works best with a screen resolution of at least 1024x768 pixels. You can still use the game with a smaller screen, but some dialogs will not be completely displayed.

## 2.2 Compiling FreeCol

In order to compile FreeCol you will need Java and [the Ant build system](#). When these are installed, go to the root directory of FreeCol and type `ant` to build a JAR file containing the game. This process requires the `native2ascii` task, which is an optional ant task. Some Linux distributions place optional tasks in a different package, so make sure you have installed all necessary packages if you are a Linux user. The game is started using the command `java -Xmx128M -jar FreeCol.jar`.

If something goes wrong, please open a bug report at the [SourceForge page of FreeCol](#). Use the command `ant -projecthelp` to find out about other kinds of things you can build (this manual, for example). Note that you will require additional software to build the manual, however.

# Chapter 3

## Interface

This section will provide information about various interface elements, as well as the keyboard shortcuts and the different actions that can be used in the game.

### 3.1 Starting the game

If you installed FreeCol with the system independent installer, or the Windows installer, there should be a shortcut on your desktop. Double click the icon in order to start the game. If that does not work, or if you prefer using the command line, then please read the following paragraphs.

#### 3.1.1 Command line options

If you are in the directory in which FreeCol is installed, you can start the game with the command `java -Xmx128M -jar FreeCol.jar`. This will tell the Virtual Machine to load the game and to set the maximum heap size to 128 MB. Refer to the manual of your Java Virtual Machine for details.

There are many other Java options, but you probably won't need to change the default settings. FreeCol is developed in English, but it includes translations into several other languages, some of which are not very complete, however. Java will automatically select the translation for your locale, if available, and English otherwise. If you should wish to select a different language, or if language selection fails, you can choose a different language from the [preferences menu](#).

FreeCol also provides several application-specific command line options:

- **--freecol-data DIR** Specify the directory that contains FreeCol's data files. In general, you will only need to use this if you have installed a modified copy of FreeCol's data files.
- **--windowed[[=]WIDTHxHEIGHT]** Run FreeCol in windowed mode instead of full screen mode and set the window width and height. You will need this if your window manager or Java Virtual Machine do not (correctly support) FreeCol's full screen mode. If you use Linux and Java 5, for example, you should set the window width to the width of your screen, but probably set the window height slightly lower than the height of your screen, in order to leave space for the menu bar, dock etc.
- **--load-savegame SAVEGAME\_FILE** Load the given savegame. This is particularly useful in combination with the client option **show savegame settings**.
- **--no-sound** Run FreeCol without sound. Note that the game does not yet contain any music, so the only sounds you will hear will be special effects.
- **--usage** Display the help screen.
- **--version** Display the version number.
- **--server PORT** Start a stand-alone server on the specified port. If you don't know what that means, you will not need the option.
- **--server-help** Display a help screen for the more advanced server options.

There are several other options that you will probably only be interested in if you are a developer:

- **--no-java-check** Skip the java version check.
- **--no-memory-check** Skip the memory check.
- **--log-level LEVEL** Set the java log level.
- **--debug** Start the game in debugging mode.

### 3.1.2 Game setup

If you start FreeCol without command line options, the game will first open a dialog that allows you to start a new game, to open a saved game, to open the map editor, to set various **options**, and to quit.

If you decide to start a new game, you will be presented with another dialog, which enables you to start a single-player game, to retrieve a list of servers from **meta.freecol.org**, to join a **multi-player game**, or to start a new multi-player game.

If you start a single-player game, you must decide on the number of European players (1–8) and whether to allow additional nations (which were not available in the original game) and whether to allow national advantages to be selectable (in the original game, national advantages were fixed). Of course, if you wish to have more than four European players, you must also enable additional nations, since the original game only made four European nations available.

If you choose to retrieve a list of running games from the metaserver, your computer will attempt to establish a connection to **meta.freecol.org**, port 3540. You will be presented with a list of games, from which you can select one to connect to. Please note that the list will frequently be empty, since not that many public multi-player games are being run.

If you wish to join a multi-player game, you must enter the **IP address** of a server that is running a FreeCol game as well as the port it is running on. The default port is 3541.

If you wish to start a multi-player game, then the IP address of the server will be that of your computer, but you must still select a port to run the server on. Again, the default port is 3541. You must also decide whether you want to run a public server or a private server. By default, you start a private game, which means that the game will not be available on the metaserver. Furthermore, you must decide on the number of European players (see above), and whether to use national advantages. A multi-player game may be more balanced if you do not use them, so that all players start with the same units and abilities.

FreeCol is a client-server game. The game server takes care of the game logic, and the client provides the graphical user interface. One or several clients can connect to the game server via the network. In the case of a single-player game, all other players are handled by the game server. At the moment, however, your client uses a network connection even if the server is

running on the same computer.

This means that you can only run FreeCol if you have the necessary privileges to bind an unprivileged port. If you use a **personal firewall** that blocks the port you wish to use, you will need to configure your firewall accordingly. If you wish to retrieve a list of games from the metaserver, you also need to configure your firewall to permit connections to that server, port 3540. In order to connect to a server, your client also needs to bind a port. Which port depends on the operating system you use.

If you are running a public game server, then your firewall must also permit the clients to connect to the port of the game server.

### 3.1.3 Game options

If you decide to start a single-player game or a game server, you will be able to choose which nation to play and which colour to use. If you join a multi-player game, you can also choose a nation and colour, but another players might already have selected your preferred nation. See the chapter on **your Home Country** for further information on the national advantages of various European nations.

The map generator options allow you to import a map, and to set several parameters that influence the size and terrain of a randomly generated map. FreeCol includes several hand-made maps, which can be selected by clicking on the map icon.

To import a map, either select one of the maps in the shortcut panel, enter the name of a file in the import field, or click on the browser button in order to select a file via a file browser. You have the choice to import terrain, bonuses, rumors and settlements. At the moment, the map editor does not provide all these options, however.

The map generator tab allows you to select the size of the map, as well as the amount and the general shape of the land on the map. The terrain generator tab allows you to select the number of rivers, mountains, lost city rumors, native settlements, forests, and bonus tiles on the map, as well as the humidity and temperature of the map. The latter settings will influence the terrain.

The game options proper allow you to select several parameters that influence game play, such as non-standard rules, victory conditions and the difficulty of the game. The initial values tab allows you to set the amount of gold available to the players at the start of the game. This is zero by default.



The map tab allows you to select whether to use the *Fog of War*, whether to hide enemy units in settlements and carriers, and whether to award exploration points for regions discovered by the players. By default, exploration points are only awarded for the discovery of the Pacific Ocean.

The colony tab allows you to enable custom houses to ignore boycotts. This means that custom houses will be able to export boycotted goods. This does not apply to carriers, however, and does not prevent further boycotts by the Crown. This feature of the original game is considered a bug by the FreeCol team and is therefore disabled by default. You can also allow experts to “have connections”, which means that experts working in factory-level buildings will be able to produce a small amount of goods even if the necessary raw materials are not generally available. This alleged feature of the original game is also disabled by default. Finally, you have the choice to save production overflow, which means that new buildings, for example, will not use up all available hammers, but only the exact number required. The remaining hammers will remain available for the next building project.

The victory conditions tab allows you to choose among three possible victory conditions. The game will be won by the first player to achieve independence, the player to eliminate all other European players, or the player to eliminate all other human players.

Finally, the difficulty tab enables you to select a difficulty level between very easy and very hard. The difficulty level influences various prices and probabilities in the game, such as amount of gold required to buy Indian land, and the probability of converting natives.

## 3.2 Client options

The client options panel allows you to customize how your client displays the game objects and how it handles some tasks such as auto-saving.

### 3.2.1 Display Options

- The language to use. Some languages are spoken in more than one country. In this case, you might also be able to select a specific country. If the translation you choose is not complete, the missing strings will be taken from another language file. This could be the default translation for your language or the English language version. If you selected

Austrian German, for example, missing strings would be taken from the default German translation if available, and the English language version otherwise.

- The minimum number of goods to display with a counter. If you accept the default setting of seven, for example, six hammers will be displayed without a number, and seven hammers will be displayed with the number 7 on top. Note that some panels only show a single item with a number next to it or below it anyway.
- The maximum number of goods to display. If you accept the default setting of seven, then no more than seven items will be displayed, even if the corresponding counter tells you that these seven items represent a far larger amount.
- Whether to center on the selected tile automatically.
- Whether to center on the active unit always.
- Whether to display the *Fog of War*, which enables you to see which tiles are currently visible to your units..
- Whether to scroll the map when dragging with the mouse.
- Whether to display the **compass rose** in the top right hand corner of the map. The compass rose enables you to direct your units with the mouse as well as the keypad. This is particularly useful if you play with a small keyboard, such as a laptop keyboard, which does not have a keypad.
- Whether to display the map controls, which include the **minimap**, the **info panel** and the **unit buttons**.
- Whether to display the map grid.
- Whether to display tile names, owners, regions or none of the above.
- Whether to sort your colonies by name, age, position, size or Sons of Liberty membership. Since name, age and position are unique, these keys impose a total order, whereas size and Sons of Liberty membership do not. In the case of size, the Sons of Liberty membership is used as a secondary key, and vice versa.

- How to animate the movements of your own units.
- How to animate the movements of enemy units.
- How to display the minimap:
  - Whether to attempt smooth rendering.
  - Which background color to use.
  - Which zoom level to use as default.

### 3.2.2 Message Options

You can choose whether to group messages by type, by source, or not at all. The source of the message is a game object, typically a colony or unit, and the type of the message is either the default type, which is always displayed, or one of the following types, which can be turned off:

- Warning messages. These are important and should generally not be turned off.
- Messages about the Sons of Liberty membership in your colonies.
- Messages about the efficiency of the government in your colonies. The efficiency of the government influences the production of all types of goods.
- Messages about the number of goods in your colonies' warehouses.
- Messages about units improving through experience, education or promotion after a battle won.
- Messages about units being demoted after a battle lost.
- Messages about new units, such as colonists born in your colonies.
- Messages about units lost in battle, missing in action or dead of starvation.
- Messages about the completion of buildings in your colonies.

- Foreign diplomatic messages about the declaration of wars and signing of peace treaties.
- Messages about the prices of goods in Europe changing.
- Messages about reduced production due to missing goods.
- Warnings about the suitability of colony sites. These messages are particularly useful for new players. Turn them on if you are unsure where to establish your colonies.
- Messages about the factors that influence combat. Turn them on to learn more about things like the terrain bonus, the ambush bonus, or the “artillery in the open” penalty.
- Tutorial messages. These are still a work in progress and thus rather limited.

### 3.2.3 Audio Options

FreeCol comes with a limited selection of music and special sound effects. The audio options enable you to select the output device, which you should probably leave to be automatically detected, as well as the volume of the music and special effects.

### 3.2.4 Savegame Options

- Whether to show savegame settings always, only when starting multi-player games, or never. These settings include the name, address and port of the game server you wish to connect to. If you only play single-player games, you can choose the option “never”.
- After how many turns you want the client to create an auto-save file. If you select 0, the client will never create auto-save files. If you select 1, the client will create an auto-save file every turn.
- How many generations of auto-save files you wish to retain.

### 3.2.5 Warehouse Options

- The number of goods to keep in your warehouse when exporting goods automatically (which requires a **custom house**), or by means of a **trade route**.
- The minimum number of goods in your warehouse. If you store goods of a certain type in your warehouse and the level drops below this number, you will be warned.
- The maximum number of goods in your warehouse. If you store goods of a certain type in your warehouse and the level rises above this number, you will be warned.

### 3.2.6 Keyboard Accelerators

Many but not all of the actions available via the game menu or via orders buttons are also available as keyboard shortcuts. These shortcuts can be configured.

### 3.2.7 Other Options

- Whether to load immigrants waiting in Europe onto your ships automatically.
- Whether to end the turn automatically after all your units have been moved.

## 3.3 The main screen

The figure 3.1 represents the main screen.

The main screen consists of up to six different areas: the menu bar at the top, the minimap in the lower left corner, the info panel in the lower right corner, the order buttons between the minimap and the info panel, the compass rose in the top right corner, and the main map in the background. The units, colonies, and so forth can be seen on the main map. They are also represented as coloured dots on the minimap. The **preferences menu** allows you to disable some of these controls if you wish to do so.



Figure 3.1: The main screen.

### 3.3.1 The Menubar

The menubar contains the Game, View, Orders, Report and Colopedia sub-menus at the left hand of the screen, as well as a status area at the right hand of the screen. The status area displays your score, the amount of gold you possess, your current tax rate and the current turn.

The Game Menu allows you to:

- start a new game
- open a savegame
- save the current game
- change your preferences

- reconnect to the server
- chat with another player
- declare independence
- end your turn
- return to the main menu
- view high scores
- retire from the game
- quit the game entirely

The View Menu allows you to:

- turn the map controls (minimap and info panel) on or off
- turn the map grid on or off
- switch between the unit view and the terrain view
- display tile names, owner, regions or none of the above
- change the zoom level of the main map
- switch to the Europe panel
- display trade routes

The Orders Menu enables you to give orders to the currently selected unit:

- switch to sentry mode
- fortify
- go to a destination you select
- go to a tile you select
- execute goto orders

- assign trade route
- build a colony
- plow the tile the unit is on (requires 20 tools)
- build a road on the tile the unit is on (requires 20 tools)
- load a carrier if possible
- unload all goods and units on board if possible
- wait until other units have moved
- skip this turn
- switch to a different unit on the same tile
- clear current orders
- change the unit's name
- disband the unit

Note that not all orders are available at all times. The build colony order is only available if the unit is able to build colonies and the tile it is on will support a colony, for example. The unload order is only available if the unit is carrying goods. You can unload the goods anywhere, but if you are not in Europe or in a colony, the goods will be lost. You can use this feature to dump unwanted cargo in order to avoid the **cargo penalty**.

The Reports Menu provides access to various reports on the current state of your colonies. In these reports, icons as well as text strings of a greyish-brown colour link to the places they refer to. If you click on the name of a colony, for example, the **Colony Panel** will be opened.

- The **Religious Advisor** tells you how many crosses your colonies produce, and how many crosses are required in order to recruit the next emigrant in Europe.
- The **Labour Advisor** tells you which types of colonists have emigrated to the New World or are waiting in Europe. If you can not remember where you sent your only Expert Ore Miner, for example, you can use this report to locate him.



- The **Colony Advisor** tells you which units are present in each of your colonies, what each colony is producing, which buildings have already been built, and which building is currently being built.
- The **Foreign Affairs Advisor** tells you about your relations with foreign powers, the number of colonies and units they possess, as well as their relative naval and military strength, and the amount of gold they possess. As soon as **Jan de Witt** has joined the **Continental Congress**, you are also informed about the number of Founding Fathers, the current tax and the current Sons of Liberty membership of your opponents.
- The **Indian Advisor** tells you about your relations with the various Indian nations, and the number of settlements they possess.
- The **Continental Congress Advisor** tells you which Founding Fathers are already present in the **Continental Congress** and which Founding Father is currently being elected. It also tells you how many Liberty Bells each of your colonies is producing, and whether they have already built the **Printing Press** and the **Newspaper**.
- The **Military Advisor** informs you of the deployment of your military units, as well as the strength of the **Royal Expeditionary Force**.
- The **Naval Advisor** informs you of the whereabouts of your naval units, as well as the strength of the **Royal Expeditionary Force**.
- The **Trade Advisor** details the current market prices of all goods, the profits before and after taxes you have made, as well as the amount of goods present in each of your colonies. Colonies that have already built the **Custom House** are highlighted, as are all goods that are currently being automatically exported from these colonies.
- The **Turn Report** presents a summary of various events that have occurred during the current turn. If no such events have occurred, the Turn Report will not open.
- The **Requirements Report** gives an account of how well certain requirements of your colonies are met. It tells you which colonies require expert units and where these units can be obtained or trained, for example. It also tells you which colonies require raw materials in order to

increase their production of manufactured goods, and which colonies produce a surplus of these materials.

- The **Exploration Report** provides some information about the regions you have discovered and named. If you did not select the exploration option, then the report will only show you when you discovered the Pacific Ocean, provided you did discover it.
- The **History Report** contains a short overview of important events that took place during the game, such as the first meeting with native tribes, the foundation and abandonment of colonies, among other things.

The Colopedia Menu provides access to the online game help, which is divided into eight sections:

- The terrain section contains information on all the different types of terrain you may encounter in the New World.
- The unit section provides details on various types of units, your own as well native units and units of the Royal Expeditionary Force.
- The goods section gives an overview of all the types of goods in the game.
- The building section provides information on the various constructions you may build in your colonies.
- The Founding Father section can be used to look up information on the various Founding Fathers you may elect to the Continental Congress.
- The nations section tells you which nations are available in the game, which national advantage they currently have, and which one they have by default.
- The national advantages section tells you which national advantages are available. Some advantages only apply to European players, others only to native players.

### 3.3.2 The Info Panel

If you are in unit view mode (the default), the info panel in the lower right corner of the screen either shows information about the currently selected unit, or contains a button to end the current turn if no unit is selected. If a unit is selected, then the info panel shows an image of the unit, as well as its name and the moves it has left. If the unit is a carrier unit, such as a ship or wagon train, the info panel also shows the units or goods on board of the carrier. If the unit is a pioneer, the info panel shows the number of tools the unit carries.

If a unit is displayed, you can click on the info panel in order to centre the map on this unit.

If you are in terrain view mode, then the info panel displays the name, owner, defense bonus, movement cost and potential production of the selected tile. You can switch between view modes by pressing **Shift-Ctrl-V**, or by using the view menu.

### 3.3.3 The Minimap

The minimap in the lower left corner of the screen shows you a more abstract view of the map than the main map. Different types of terrain are distinguished by colour, and units and settlements are also represented by dots in the colour of the nation that owns them. You can use the minimap to navigate around the map quickly. Either click on the minimap to center the view on a certain point, or drag the white frame around. Zoom buttons to the left and to the right of the minimap allow you to zoom into and out of the view.

### 3.3.4 The Unit Buttons

The unit buttons displayed between the minimap and the info panel allow you to give order to your units. Note that not all buttons are always active. A ship can not plow a tile, for example, so the plow button is never active if the selected unit is a ship. The eight buttons have the following functions:

- wait
- skip turn

- fortify
- clear forest / plow tile (requires 20 tools)
- build road (requires 20 tools)
- build colony
- disband unit

All these actions are also available from the **Orders Menu** of the menu bar, and as **keyboard shortcuts**.

### 3.3.5 The Compass Rose

The compass rose can be displayed in the top right corner and allows you to give your units movement orders by clicking on the corresponding direction. It is primarily intended for users who do not wish to (or are unable to) use the keyboard shortcuts.

### 3.3.6 The Main Map

The main map shows you the New World in greater detail. You can see the different types of terrain, forested and otherwise, hills, mountains, rivers, and, of course, the various units and settlements of the native and European players. Left click on a tile in order to center the main map, or on a unit in order to select it (a **display option** allows you to decide whether the map should always centre on the selected unit, or not).

Your colonies as well as those of your opponents are displayed on the map. You can see their names as well as their sizes, which are displayed as a number and also influence the image used to represent them. The color of the colony's name is always the color of its owner, but the color of the colony size indicates whether any production bonuses or penalties apply (at normal difficulty):

Colour	Bonus/Penalty	Requirements
Red	-2	more than eight tories
Orange	-1	four to seven tories
White	0	less than four tories and less than 50% SoL
Green	+1	50% SoL or more
Blue	+2	100% SoL

Left click on a colony in order to open the **colony panel**. If there is an active unit outside of the colony on the same tile, then a single left click will select the unit instead. In this case, a double click will still open the colony panel.

Right clicking on an empty tile, will either display some information on that tile if no unit is selected, or open a pop-up menu that additionally allows you to send the selected unit to this tile. If the tile contains some of your units, the menu will also enable you to select each of these units. If the tile contains a native settlement, the menu will also provide you with an item that will bring up some information on that settlement. If the tile contains one of your own colonies, the menu will also allow you to open the **colony panel**.

You can also activate the map scroll by moving the cursor towards the edges of the main map. Scrolling with the minimap is faster, however.

If a unit is selected, further information about that unit is displayed in the **info panel**, and you can move the unit using the numeric keypad or the **compass rose**. If you select a unit with the left mouse button and drag the mouse, the main map will display the best path from the unit's current position to the tile the mouse is hovering over.

The tiles the path consists of will be marked with boots if the unit is on foot, with horseshoes if the unit is mounted, with wheels if the unit is a wagon train, or with sextants if the unit is a naval unit. Full-colour symbols mark tiles that can be reached in the same turn, whereas shaded symbols mark tiles that can be reached only in subsequent turns. A number indicates how many turns later the unit will arrive on this tile. You can see this on the **main screen**.



Once you release the mouse button, the selected unit will begin to follow this path. It will awake once it has arrived at its destination or if it can no

longer follow the path (if a unit belonging to a different player is in the way, for instance). You can also press the middle mouse button, or both mouse buttons if your mouse only has two buttons, in order to give the selected unit a movement order.

In the original Colonization game, a unit always used up all movement points when entering a colony. In FreeCol, this is not the case — a unit can enter a colony just like any other tile. If the unit is placed in a building, or on a colony tile, or if a carrier is loaded or unloaded, however, it will lose all its movement points.

Units are marked with small coloured shields, which may or may not display a letter. The background colour indicates the nation this unit belongs to. The Dutch units, for example, are usually marked with orange shields. The letter indicates the current state of the unit:

- -: the unit is active (no orders).
- F: the unit is fortified.
- G: the unit is going somewhere.
- P: the unit is plowing a tile.
- R: the unit is building a road.
- S: the unit is a sentry (waiting for transport).
- T: the unit is following a trade route.
- W: the unit is waiting for orders (skipped).
- 0: the unit has no moves left.
- #: the unit's state is unknown (some enemy units).

If the unit is a foreign naval unit, the shield will display a number instead. This is the number of holds this unit is using.

Indian Settlements display at least two shields: The colour of the first shield indicates the nation this settlement belongs to. A \* on this shield indicates that this settlement is the nation's capital, a — that it is not. The second shield, which bears an exclamation mark (!) if you have visited the settlement, and a question mark (?) if you have not, indicates the current

relations between the nation and your colonists. Its background may be green, blue, yellow, orange or red, depending on whether your relations are good, mediocre or bad.

A Settlement with a European mission displays a third shield bearing a cross on a black or grey background. The colour of the cross indicates the European nation that established the mission. The background of the shield is black if the mission was established by a **Jesuit Missionary**, and grey otherwise.

The order buttons represent some of the orders you can give to your units. You can move your mouse over the buttons to see their respective orders. If a unit is unable to perform a certain action, the corresponding order button will be disabled. The orders are also available from the **Orders Menu**, and you can use the following keyboard shortcuts:

- a: assign a trade route.
- b: build a colony.
- c: center on the currently selected unit.
- d: disband the active unit.
- e: show the Europe panel.
- f: fortify.
- g: goto some destination tile.
- h: goto some colony (or Europe if a ship).
- l: load (fill up all holds already in use).
- n: rename the unit.
- o: execute goto orders immediately.
- p: plow the current tile (requires 20 tools).
- r: build a road on the current tile (requires 20 tools).
- s: be a sentry (wait for something to happen).
- t: show trade routes.

- `u`: unload or dump cargo.
- `w`: wait for another unit to move.
- `z`: clear orders.
- `tab`: switch to next unit on tile, or to colony screen.
- `space`: skip for this turn.
- `enter`: end the turn.
- `plus or equals`: zoom in.
- `minus or underscore`: zoom out.
- `ctrl-d`: display tile names.
- `ctrl-f`: find a colony.
- `ctrl-g`: display grid.
- `ctrl-m`: show/hide the map controls.
- `ctrl-n`: new game.
- `ctrl-o`: open a game.
- `ctrl-q`: quit the game.
- `ctrl-r`: reconnect.
- `ctrl-s`: save a game.
- `ctrl-t`: show the chat panel.

You can customize these settings in the preferences dialog.



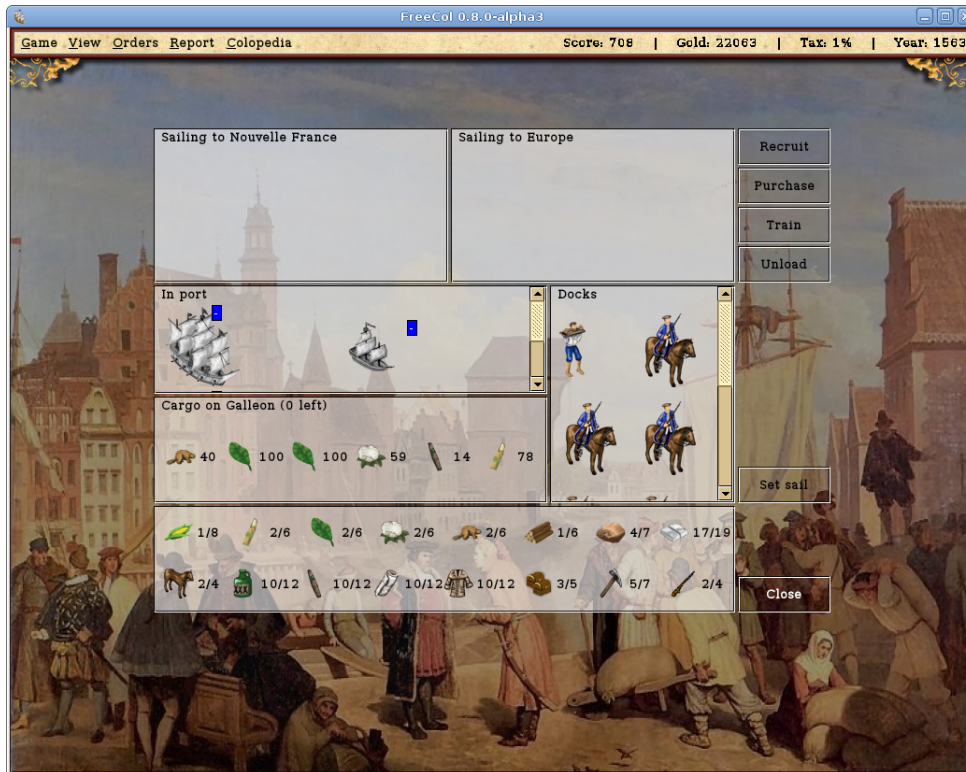


Figure 3.2: The Europe Panel

## 3.4 The Europe Panel

The figure 3.2 represents the Europe panel.

In this panel, you can control the ships sailing between America and Europe, as well as the ships currently docked in Europe. You can also buy goods, recruit, purchase and train units. Units recruited, purchased or trained are in the Docks Area in the Europe panel.

If a ship has set sail for Europe or America, you can change its direction by dragging it from the Going to America box to the Going to Europe box (or vice versa).

If a ship has docked at the European port you can drag and drop units between the Docks and Cargo panel. You drag and drop goods between the Cargo panel and the Market panel. If you want to buy or sell less than 100 units of goods, press the shift key while dragging. This will allow you

to specify how many units you wish to transfer. If you press the “Unload” button, all goods will be unloaded.

If any of the goods are displayed in grey, this means they are being boycotted by the Crown because you refused a tax raise. You must pay your tax arrears before you can trade these goods. You can do this by dragging the goods as usual, in which case you will be given the chance to pay your tax arrears (provided you have enough money). A small area at the top right of the screen will keep track of how much money you made or spent and how much taxes you paid.

From time to time, new colonists eager to join you in the New World will appear on the European Docks. If you are unwilling to wait, you can also recruit new colonists by paying for their journey to the New World. Alternatively, you can train expert units at the Royal University. Paying for their education is expensive, however, and not all types of experts are available in Europe.

Units present in Europe can also be armed, mounted, equipped with tools or blessed as missionaries in Europe. In order to select one of these actions, you need to right click on the unit. Note that you will have to pay for the arms, horses or tools required to equip your units.

In order to send a ship back to the New World, you must drag it to the Going to America section of the Europe panel, or press the “Set sail” button.

## 3.5 The Colony panel

The figure 3.3 represents the Colony panel.

To view a colony’s panel, left click on it from the main screen. In this panel, colonists can be assigned to cultivate tiles surrounding the colony, to work in buildings, defend the colony against attackers or wait outside of the colony.

The colony panel consists of several panels and control elements with different functions. At the top of the panel, you can see a select box displaying the name of the colony, which can be used to select a different colony.

Below this select box, you can see the area surrounding the colony to the left and a scroll pane displaying the buildings of the colony to the right. You can drag and drop a unit on a tile or a building. The tiles surrounding the colony can produce several kinds of goods, however. If the unit is not producing the right kind of goods, you can right click on the unit to select



Figure 3.3: The Colony Panel

a different kind of work. If a tile has a red border, then it is being used by another colony or settlement. Please note that you can not use water tiles until you have built **docks**.

As buildings can produce only one type of goods, the unit will automatically do the right kind of work. Nonetheless, you can also right click a unit in a building in order to assign it to a different building.

Below the surrounding area, you can see the production panel, which shows how much food, horses, bells and crosses your colony is producing. It also tells you how many colonists support the Sons of Liberty and how many support the crown.

Below the list of buildings, you can see four elements related to the production of buildings and units. At the top left, a select box allows you to select the building or unit you wish to build. The button at the bottom left allows you to buy the selected building or unit instead of building it. The two progress bars to the right show you how many hammers and tools are

required to finish the selected building or unit, how many hammers and tools you have already produced, how many will be produced in the next turn, and how long it will take until all necessary goods have been produced.

Yet further below, two panels show you the ships or wagon trains in your colony's port. If there is at least one unit present, the cargo panel to the right will show you the cargo of the selected carrier. Below these two panels, you can see the colony's warehouse area. You can drag and drop goods from the warehouse to the cargo panel and vice versa in order to load and unload your ships or wagon trains. Press the shift key while selecting goods if you do not wish to select all the goods present, or less than one hundred units.

You can also drag and drop units from one of the other areas to the cargo panel of a ship.

The **Warehouse** can only hold a certain amount of goods of each type. Its initial capacity is limited to 100 units of each type of goods, but it can be increased to 300 by building two **Warehouse Expansions**. If the current limit of the warehouse is exceeded, the number of goods is printed in red. If you do not store the excess units elsewhere, they will be lost at the end of the turn.

If you have already built a **Custom House** in the colony, you can export goods to Europe automatically. Goods marked to be exported are printed in green. Open the warehouse dialog (see below) in order to change export settings.

To the right of these panels you can see the units outside of your colony. These can be fortified units defending your colony, or units just passing through, or waiting for passage elsewhere. Right clicking on one of these units once again allows you to give them orders. You can also drag and drop units from and to this area.

At the bottom of the Colony Screen, you will see a row of buttons, not all of which are always active. From left to right, these buttons will allow you to

- Unload the active ship or wagon train
- Fill up all partially filled holds of the active ship or wagon train
- Open the warehouse dialog in order to change the export and warning levels for all types of goods (see below)
- Rename the colony

- Close the dialog

### 3.5.1 The Warehouse Dialog

The warehouse dialog allows you to set the warning levels for all types of goods. If you have turned on the warnings about goods levels, you will receive a warning if the number of goods drops below the lower level or rises above the higher level. In a warehouse with a capacity of 100 units of each type of goods, the lower level is set to 10 and the higher level is set to 90 by default.

The export level allows you to specify how many goods should be kept in reserve if goods are automatically exported from this colony, either through the **Custom House**, or by a carrier following a **Trade Route**. A checkbox indicates whether this type of goods should be exported through the Custom House or not. If you have not yet built a Custom House in this colony, the checkbox is disabled.



# Chapter 4

## The New World

At the beginning of the game, you will start with a naval vessel and two colonists. Your first task will be to discover the New World, which should lie due West, although sailing North West or South West may prove quicker. As soon as you have discovered land, you can establish your colonies and produce goods to send home to Europe.

### 4.1 Terrain Types

There are many different types of terrain in the New World, each with its own peculiar advantages. At the beginning of the game you will probably arrive at a **High Seas** tile (or at the edge of the map). High Seas tiles (and the map edge) allow you to sail between Europe and the New World. As you approach land, the High Seas will be replaced by **Ocean** tiles, which produce **Fish**.

In the New World, you will also discover **Plains**, which produce a great deal of Grain, a lesser amount of Cotton, and some Ore; **Grassland**, on which Grain and Tobacco can be cultivated; **Prairie**, which are suitable for growing Grain and Cotton; **Savannah**, which produces Grain and Sugar; **Marsh**, where Grain can be cultivated and some Ore can be mined; **Swamp**, which yields some Grain, and small amounts of Sugar, Tobacco and Ore; **Desert**, which produce some Food, Cotton and Ore; as well as **Tundra**, where Grain can be grown, and some Ore can be mined.

Large parts of the New World are covered in forests, all of which yield varying amounts of Grain, Lumber and Furs. The **Boreal Forest** also pro-

duces Ore, the **Mixed Forest** Cotton, the **Conifer Forest** Tobacco, the **Tropical Forest** Sugar, the **Rain Forest** produces small amounts of Ore, Sugar and Tobacco, the **Wetland Forest** and the **Scrub Forest** yield some Ore, and the **Broadleaf Forest** Cotton.

The **Hills** produce a small amount of Grain, and can be mined for Ore and a lesser amount of Silver. The **Mountains** are unsuitable for agriculture, but yield some Ore and Silver. **Arctic** tiles are the least useful type of terrain, as they produce nothing at all. Terrain types that produce no Grain, such as the Mountains and Arctic types, can not support colonies.

Clearing or plowing a tile, and building a road require spending 20 tools. Therefore, these actions can only be carried out by units carrying at least 20 tools. You can equip your units in your colonies or in Europe.

## 4.2 Goods

The New World produces many goods, which can be traded in Europe. In order to this, you must use your ships to transport them to your **Home Port**. As soon as the ship arrives in Europe, you can sell the goods, and buy others, in the **Europe Panel**. Later in the game, after you have built **Custom Houses**, goods can be exported automatically. Until then, you can partially automate this process by establishing **Trade Routes**.

Exporting these goods to Europe will be one of your most important sources of income. At the beginning of the game, you will probably want to export raw materials, such as **Sugar** and **Tobacco**, but as prices drop, you should concentrate on luxury products, such as **Rum** and **Cigars**, which command higher prices.

**Food** is the single most important good, since all your colonists consume two units of food each turn. If this demand can not be met, some of your colonists will starve to death. On the other hand, a colony that has accumulated 200 units of food will produce a new **Free Colonist**. Unfortunately, buying food in Europe is always expensive, and colonial foodstuffs fetch only poor prices.

Food comes in two varieties, **Grain**, which can be cultivated on nearly all land tiles, and **Fish**, which is produced by **ocean** and lake tiles. In order to harvest the bounty of the sea, you will need a **Dock**, however.

Breeding new **Horses** also requires food, but the horses you already have are content to eat grass and consume no more of your precious food. In order



to breed horses, you need at least two horses in your colony (for obvious reasons). Breeding horses does not require **Stables**, but Stables do speed things up.

Four raw materials are typical for the New World. They will initially generate a good income, but prices will inevitably drop. These goods are **Sugar**, which is best cultivated on **Savannah** tiles, **Tobacco**, best cultivated on **Grassland**, **Cotton**, which is most abundant on **Prairie** tiles, and **Furs**, which are available on all forested tiles, but most abundantly on **Boreal Forest** and **Mixed Forest** tiles.

These four materials can be used to produce corresponding luxury goods, which will fetch much higher prices in Europe. In a **distillery**, **Rum** is produced from Sugar. Tobacco is used to make **Cigars** in the **Tobacconist's House**. The Weaver weaves **Cloth** from Cotton in his **house**, and the Fur Trader turns Furs into **Coats** in his **house**.

Initially, the resource which fetches the highest prices in Europe is **Silver**, which can be mined in **Hills** and **Mountains**. As prices drop, Silver will become less and less useful, however. On the other hand, Hills and Mountains also produce **Ore**, which is not in great demand in Europe, but which can be refined to produce **Tools** in the **Blacksmith's House**. Tools are required for clearing forests and plowing fields, as well as for constructing advanced buildings and units. Furthermore, **Muskets** can be produced from Tools in the **Armory**.

**Lumber** also fetches poor prices in Europe, but can be used to produce **Hammers** in the **Carpenter's House**. Hammers are required for constructing all buildings, as well as **naval units** and **Wagon Trains**. Hammers are “abstract” goods that can neither be transported nor traded. They represent the work required to finish a building rather than some tangible material.

The two other “abstract” goods are **Liberty Bells**, which are produced in the **Town Hall**, and **Crosses**, which are generated by the **Church**. They represent the concepts of liberty and of religious freedom. Liberty Bells are needed to convince your colonists of your policies, and to elect **Founding Fathers** to the **Continental Congress**, whereas Crosses attract further colonists.

**Trade Goods**, on the other hand, can be transported and traded, but they can not be produced in your colonies. They are only available in Europe and are useful for trading with native settlements, which generally demand Trade Goods.

### 4.2.1 Trade Routes

The **orders menu** allows you to assign a Trade Route to a ship or wagon train. If you select this order, the trade route dialog, which enables you to select a trade route or create a new trade route, will open. If you have not created a trade route, you must use the edit trade route dialog to do so first.

A trade route consists of two or more stops, which may either be the **Home Port**, or one of your colonies. Select a destination from the select box and press the **add new stop** button. If you select the special destination **all colonies**, then your Home Port and all your colonies will be added to the list of stops.

If you have selected a destination, you can drag and drop goods from the goods panel to the cargo panel. These are the goods your ship or wagon train should have on board when leaving this stop. If the ship or wagon train arrives at the destination with other goods on board, these goods will be unloaded.

Note that the ships and wagon trains will take the capacity and settings of the warehouses in your colonies into account. They will not unload cargo that would be wasted and they will only load goods that should not be kept in reserve. This means that they may wait for a long time until a sufficient number of goods becomes available.

As soon as a ship or wagon train reaches the last destination of the trade route, it will continue at the first destination.

## 4.3 Special Resources

Some types of terrain can also have special resources, which increase the production of a particular type of goods. These resources look just like the goods they will produce. These tiles are particularly valuable.

## 4.4 Native Settlements

The New World is by no means an uninhabited country. Various tribes of Indians already live there, and make use of the land. When your colonists arrive, you will have to decide whether you will attempt to peacefully coexist with the natives, or to wipe them out. The **French** player has the advantage of generating only half the alarm among the natives. The **Spanish** player has

the advantage of greater military efficiency against the natives. Your choice of **Home Country** may influence your strategy — or vice versa.

Small Native Settlements use the tile they are built on as well as all adjacent tiles, just like your **Colonies** do. Large Native Settlements also use tiles that are two moves away. Your colonists can not use tiles that are already used by natives. If they attempt to do so, the natives will demand some gold for the land. You must then decide whether to pay their price, take the land away from them by force, or to leave the land alone. Naturally, the natives will not be pleased if you take the land away from them. As soon as **Peter Minuit** has joined the **Continental Congress**, however, the natives no longer demand payment for their land.

Colonies and armed units near their settlements will alarm the natives and poison your relations. If the natives are happy, they will come to your colonies offering gifts. If they are unhappy, they will come and make demands instead. If they get really angry, they may attack your units or colonies. After a few turns, however, they will usually calm down again.

Some types of units may enter Native Settlements. Units that carry goods, such as **Wagon Trains** and **Ships**, can enter the settlements and trade with them. Trade always improves your relations with the natives. If you offer your goods as a gift, this will improve your relations even more.

**Scouts** can either ask to speak with the chief of the tribe, or demand tribute, which is obviously not good for your relations with the natives. If your scout speaks with the chief, you will learn which skill this settlement teaches and which goods the natives would prefer to acquire. Furthermore, the chief may offer you some gold, or tell you about nearby lands. If your Scout is not a **Seasoned Scout** already, he may become so.

**Free Colonists** and **Indentured Servants** may enter a settlement in order to learn the skills of the natives.

**Missionaries**, which may be either **Jesuit Missionaries** or ordinary colonists blessed as missionaries in the **Home Port** or any colony with a **Church**, are able to establish a **Mission** or to incite the natives against another European nation. If a Jesuit Missionary, or an ordinary colonist blessed as a missionary is equipped with tools, muskets or horses, he loses his missionary status and is no longer able to establish a mission.

The presence of a Mission will reduce tension between the natives and your colonists. In time, some of the natives may also convert and join your colonies as **Indian Converts**. If the settlement already contains the mission of another European country, your missionary may denounce the teachings

of that mission as a heresy. If he is successful, the natives will burn down the old mission and your missionary establishes a new one.

Note that the missionary will always remain in the settlement. He is effectively lost to you.

## 4.5 Lost City Rumours

In the New World, there are also rumours about **Lost Cities**, such as El Dorado, or Cibola. You may send your colonists to explore these rumours, and you might indeed discover one of the Seven Cities of Gold, and a **Treasure Train**. Other outcomes, however, are also possible.

Mostly, the rumour proves to be nothing but a rumour. Occasionally, you might disturb the burial grounds of a native tribe, which will cause the tribe to declare war on you. It is also possible that your expedition simply vanishes without a trace. On the other hand, you might also discover a small tribe and a few trinkets. Your colonist might become a **Seasoned Scout** if he has no other skill, or you might discover the sole survivor of a lost colony.

Possibly the best outcome is the discovery of the **Fountain of Youth**, which will cause numerous colonists to appear on the docks in your **Home Port**.

As soon as **Hernando de Soto** has joined the **Continental Congress**, Lost City Rumours always yield positive results.

## 4.6 Exploration

The original Colonization game awarded exploration points only for the discovery of the Pacific Ocean. This is also the default behaviour for FreeCol. However, you may choose to play with exploration points, in which case you will be awarded exploration points for the discovery of a new region of the New World.

A region may be either a large area of land, a mountain range, or a river valley. If you discover a region, you will be asked to name it, and you will be awarded a number of exploration points depending on the size of the region discovered.

# Chapter 5

## Colonies

### 5.1 Picking a suitable site

Your colonies are your most important assets in the new world. Therefore, it is very important to build them in the right place. There are several aspects to consider:

#### 5.1.1 The colony tile

Some terrain types are more suitable for establishing a colony than others. Colonies can not be built on Arctic tiles, nor on Mountains, because these terrain types produce no Grain. Hills and Deserts are less suitable than other tiles because they produce less food, which is very important in the long run. Tiles with forest generally produce less food than tiles without, but **Pioneers** are able to cut down the forest and plow the tile, which will increase food production. The presence of a river will also increase food production.

The **Hills** produce a small amount of Grain, and can be mined for Ore and a lesser amount of Silver. The **Mountains** are unsuitable for agriculture, but yield some Ore and Silver. **Arctic** tiles are the least useful type of terrain, as they produce nothing at all. Terrain types that produce no Grain, such as the Mountains and Arctic types, can not support colonies.

The New World is also irrigated by minor and major rivers. The production of most types of **Goods** is increased by the presence of rivers and roads, which your **Pioneers** can build. All terrain types which produce Grain (except the Hills) can also be cleared or plowed by your Pioneers. In the case of open land, plowing increases the production of Grain and most other types

of goods. In the case of forests, clearing removes the forest and transforms the tile into open land: Boreal Forest is transformed into Tundra, Mixed Forest into Plains, Conifer Forest into Grassland, Tropical Forest into Savannah, Wetland Forest into Marsh, Rain Forest into Swamp, Scrub Forest into Desert, and Broadleaf Forest into Prairie.

### 5.1.2 The adjacent tiles

In the early stages of the game, you will need to generate cash by selling products from the New World in your Home Port. Thus, many of your early colonies should probably be situated next to bonus tiles, which greatly increase production. Rivers also increase production, though not as much as a bonus resource. On the other hand, they increase the production of many different kinds of goods, unlike a bonus resource.

In order to improve your colony, you will have to construct various buildings. This will require large amounts of lumber. For this reason, you should make sure that at least one tile adjacent to your colony site can produce sufficient amounts of lumber. You will also need tools to construct advanced buildings. Therefore, it is an advantage if the colony can also produce ore, which can be refined to produce tools. However, ore is not as important as lumber.

Some of the tiles may be owned by other European powers, or claimed by Indians. Building a colony too close to other settlements is not a good idea, unless you plan to conquer or destroy these settlements. Keeping your own colonies close together is a good strategy, however, as long as you avoid sharing tiles between several colonies as far as possible.

### 5.1.3 No Reforestation

You can order your pioneers to cut down forests by plowing a tile. This will increase the food produced on these tiles, and the lumber will be delivered to your colonies. However, you can not plant new forests later. Once cleared, a tile will never produce lumber again.

### 5.1.4 Government Efficiency

The efficiency of the local governments of your colonies depends on the colonists' support for the **Sons of Liberty**. If more than 50% of the colonists

support the Sons of Liberty, they all produce one additional unit of goods, and if support for the Sons of Liberty increases to 100 %, they even produce two additional units.

On the other hand, if the number of Tories exceeds a certain number which depends on the difficulty of the game (4 colonists by default), their production decreases by one unit, and if it exceeds this limit by four colonists, their production is decreased by two units. This waste may well destroy your colony and should be avoided at all costs.

In order to prevent this kind of mismanagement, you need to increase the support for the Sons of Liberty. You can do this by producing Freedom Bells in the Town Hall.

## 5.2 Colony Buildings

A newly established colony already includes several buildings, namely a town hall, a carpenter's house, a blacksmith's house, a tobacconist's house, a weaver's house, a distiller's house, a fur trader's house, and a warehouse. You can improve your colonies by upgrading all of these buildings except the town hall, and by constructing various new buildings. However, many buildings can only be constructed in colonies of a certain size, or after certain **Founding Fathers** have joined the **Continental Congress**.

The craftsmen's houses can be upgraded to workshops, which produce more manufactured goods. After **Adam Smith** has joined the **Continental Congress**, workshops can be upgraded to factories, which produce one and a half units of manufactured goods from each unit of raw material. While the town hall itself can not be upgraded, the production of **Liberty Bells** can be boosted by constructing a printing press and then a newspaper.

The following buildings are all present in every newly established colony:

- The **Town Hall**, which can not be upgraded, provides workplaces for up to three colonists producing **Liberty Bells**. Its effect can be increased by building a **Printing Press** and a **Newspaper**.
- The **Carpenter's House**, which can be upgraded to a **Lumber Mill** once the colony's population reaches 3, is used to convert **Lumber** to **Hammers**. Hammers are required to construct or upgrade all kinds of buildings.

- The **Blacksmith's House**, which can be upgraded to a **Blacksmith's Workshop**, is used to convert **Ore** to **Tools**. Tools are required to construct certain kinds of buildings and to upgrade all kinds of buildings. Tools are also used by **Pioneers** and to produce **Muskets**. Once the population of the colony has reached 8, the Blacksmith's Workshop can be replaced by **Iron Works**, provided that **Adam Smith** has joined the **Continental Congress**.
- The **Tobacconist's House**, which can be upgraded to a **Tobacconist's Shop**, is used to produce **Cigars** from **Tobacco**. Once the colony's population has reached 8, it can be further upgraded to a **Cigar Factory**, provided that **Adam Smith** has joined the **Continental Congress**.
- The **Weaver's House**, which can be upgraded to a **Weaver's Shop**, is used to turn **Cotton** into **Cloth**. It can be upgraded to a **Textile Mill** as soon as the population of the colony is at least 8 and **Adam Smith** has joined the **Continental Congress**.
- The **Distiller's House**, which can be upgraded to a **Rum Distillery**, is used to produce **Rum** from **Sugar**. Once **Adam Smith** has joined the **Continental Congress** and the colony's population is at least 8, the rum distillery can be replaced by a **Rum Factory**.
- The **Fur Trader's House**, which can be upgraded to a **Fur Trader's Post**, is used to produce **Coats** from **Furs**. Once the colony's population has reached 6, it can be further upgraded to a **Fur Factory**, provided that **Adam Smith** has joined the **Continental Congress**.
- The **Depot** stores all kinds of goods. Its initial capacity is 100 units of each kind of goods, but it can be upgraded to a **Warehouse** with a capacity of 200 units and to a **Warehouse Expansion**, which holds 300 units. No colonists work in the warehouse buildings.
- The **Chapel** is a small religious building which produces only a single **Cross** and does not require a preacher. It can be upgraded to a **Church** as soon as the population has reached 3 and to a **Cathedral** as soon as the population reaches 8. Both the Church and the Cathedral may house up to three preachers. The religious freedom of the New World (symbolized by **Crosses**) causes increased emigration from Europe.



- The **Pasture** surrounding your colony is used to breed horses. It can be upgraded to **Stables**, which potentially double the production of **Horses**. Neither the Pasture nor the Stables need colonists to operate.

The following eight buildings are not part of your basic colony and have to be constructed later:

- A colony with a population of at least 4 may build a **Schoolhouse**, which enables some master craftsman to teach an unskilled colonist their trade. As soon as the population reaches 8, it can be upgraded to a **College**, in which additional trades can be taught by two colonists. Once the population reaches 10, the college can be replaced by a **University**, at which all trades can be taught by three colonists. See **Skills and Education** for details.
- The **Armory** is used to produce **Muskets** from **Tools**. As soon as the population reaches 8, the armory can be upgraded to a **Magazine** and then to an **Arsenal**, provided that **Adam Smith** has joined the **Continental Congress**.
- The **Stockade**, which can be constructed as soon as the colony's population reaches 3, protects the colonists from attacks. In the original game, a colony with a stockade could not be abandoned, it can only be burned to the ground by natives. This rule is considered a misfeature by many players and is not part of FreeCol's default rule set. The stockade can be upgraded to a **Fort**, which provides better protection and bombards **Privateers** and enemy naval units on adjacent ocean tiles. The fort can be replaced by a **Fortress** as soon as the population reaches 8.
- The **Dock** allow colonists to produce **Fish** on ocean tiles adjacent to the colony. As soon as the population is at least 4, it can be upgraded to a **Drydock**, which allows the colony to repair damaged ships. When the colony's population reaches 8, it can be further upgraded to a **Shipyards**, which enables the colony to build new ships.
- The **Printing Press**, which can be upgraded to a **Newspaper** as soon as the population reaches 4, increases the colony's production of **Liberty Bells**.

- The **Custom House**, which can be built as soon as **Peter Stuyvesant** has joined the **Continental Congress**, allows the colony to export goods to Europe directly without the help of ships. Optionally, it may also ignore **Boycotts**.

### 5.3 Using Buildings

Some buildings have an immediate effect. The **Stockade**, for example, provides protection for your colony, and the **Docks** enable your colonists to go fishing. The effects of these buildings can not be increased by workers. In the building box at the top right of the **colony panel**, these buildings are shown in parentheses, like this: “(Stockade)”.

Most buildings do nothing if they are unoccupied, but provide workers with a place to produce manufactured goods. The **Tobacconist’s House**, for example, allows colonists to make **Cigars** from **Tobacco**. Place one or more colonists in a building in order to convert raw materials to manufactured goods, which can be sold for higher prices. For each building, there are expert units that work more effectively than **Free Colonists**. Other units may work less effectively.

### 5.4 Building Units and Buildings

In order to upgrade buildings, and to construct new buildings and certain kinds of units, such as **Artillery** and ships, you will need to produce **Hammers**, which represent work being done. Hammers are made from **Lumber**, so you need to produce lumber, either by cutting down forests, or by placing a colonist on a forested tile next to your colony and ordering him to work as a lumberjack (right click on the unit to give it orders). Then you can place a colonist in the **Carpenter’s House** in order to convert the lumber to Hammers.

Units and advanced buildings also require **Tools**, which are made from **Ore**. So you need to place an ore miner on a tile that produces ore (**Hills**, for example) and another in the **Blacksmith’s House**, in order to convert the ore into tools.

# Chapter 6

## Your Home Country

Your **Home Country** is a European monarchy and colonial power. The original game featured four playable nations, namely **Spain**, **France**, **England** and the **Netherlands**. FreeCol optionally adds **Portugal**, **Denmark**, **Sweden** and **Russia**.

Virtually all players agree that the addition of Portugal corrects a glaring omission of the original game, but the other three European nations are controversial. Sweden, Denmark and Russia all had colonies or territories in the Americas, but were either minor colonial powers or arrived very late. However, as we wished to make multi-player games with up to eight human players possible, we had to add further nations. We might well change the selection at some later date, and you can change the selection by editing the rules yourself.

Each of these countries may have special abilities and different starting units. In the original game, these abilities and units were tied to particular nations. FreeCol, however, optionally allows you to select your national advantage.

At the moment, FreeCol defines the following six advantages, and also allows you to select no advantage at all:

- No advantage: You start with two Free Colonists and a Caravel, and no special abilities. This is mainly intended for multi-player games, as it removes a potential imbalance between players.
- The trade advantage: You can buy and sell twice as many goods in Europe before prices change. You start with two Free Colonists and a Merchantman.

- The cooperation advantage: You generate only half as much native alarm as the other European nations. You start with a Free Colonist, a Hardy Pioneer and a Caravel.
- The immigration advantage: You need to generate only two thirds as many crosses as the other European nations in order to attract new immigrants. You start with two Free Colonists and a Caravel.
- The conquest advantage: You capture twice as much treasure and twice as many “converts” when destroying native settlements. You start with a Free Colonist, a Veteran Soldier and a Caravel.
- The naval advantage: All your ships can move one tile further than those of other European nations. You start with two Free Colonists and a Merchantman.
- The building advantage: Your lumberjacks produce two units of lumber and your carpenters produce two hammers more than those of other European nations. You start with an Expert Lumberjack, a Master Carpenter and a Caravel.
- The agriculture advantage: Your farmers produce two units of food more than those of other European nations. You start with an Expert Farmer, a Free Colonist and a Caravel.
- The fur trapping advantage: Your fur trappes produce two units of fur and your fur traders produce two coats more than those of other European nations. You start with an Expert Fur Trapper, a Master Fur Trader and a Caravel.

In the original game, the Dutch had the trade advantage, the French had the cooperation advantage, the English had the immigration advantage and the Spanish had the conquest advantage. In FreeCol, this is also the default, although you can optionally select different advantages. By default, the Portuguese have the naval advantage, the Swedish have the building advantage, the Danish have the agriculture advantage and the Russians have the fur trapping advantage. This is likely to change in the future, however.

## 6.1 Your Home Port

The **Home Port** is a port city in your home country, where you can trade **Goods**, and train, recruit and buy **Units**. If you have not built a **Drydock** in any of your colonies, your damaged ships will also return to the Home Port for repairs.

As you generate **Crosses** in your colonies, colonists will appear at the docks of the Home Port. Unless **William Brewster** has joined the **Continental Congress**, many of these colonists will be **Indentured Servants** and **Petty Criminals**. Once William Brewster has been elected, these units will no longer appear at the docks, and you will be able to select the next colonist to emigrate from the recruitment list.

The recruitment list is a list of three colonists who are thinking about emigrating to the New World, but have not yet reached a decision. You can recruit them by offering gold as an incentive. At the beginning of the game, this is a good way of increasing the population of your colonies. However, the amount of gold required will greatly increase during the game.

If you have enough gold, you can also train colonists at the Royal Academy. In exchange for the education you provide, they will also emigrate to the New World. Not all types of colonists can be trained at the Royal Academy, however.

**Ships** and **Artillery** can also be purchased in the Home Port. You can also build these units in your colonies, as soon as you have built a **Shipyard** and an **Armory**, respectively.

## 6.2 Your Monarch

Your Home Country is ruled by a **Monarch** whose actions can have a profound influence on your colonies and your relations to other nations present in the New World.

From time to time, the Monarch may decide to raise the **Taxes** you pay on all goods you sell in the Home Port. You may refuse to accept these taxes, however, in which case your colonists will stage a protest similar to the **Boston Tea Party** and throw some goods into the harbour. The Monarch will not be amused and will boycott this type of goods. This means that you will no longer be able to trade these goods in the Home Port until the Boycott is lifted.

You can end a Boycott by paying the outstanding tax arrears. As soon as **Jacob Fugger II** joins the **Continental Congress**, all Boycotts will be lifted, but the Monarch may declare further Boycotts later on. As soon as **Peter Stuyvesant** joins the **Continental Congress**, you will be able to build **Custom Houses** in your colonies. The original Colonization game contained a bug which made the Custom House ignore all Boycotts, and this behaviour is available as a rule variant.

Naturally, the Monarch does not trust your colonists, some of which are nothing but **Petty Criminals**, and some of which even support the infamous **Sons of Liberty**. For this reason, the crown maintains the **Royal Expeditionary Force**, which is to put an end to insurrections in the New World. From time to time the Monarch may inform you that further units have been added to the Royal Expeditionary Force, just so that you don't get any ideas.

The Monarch may also declare war on any nation present in the New World, both European and native. This will also affect your relations with this nation, unless **Benjamin Franklin** has already been elected to the **Continental Congress**. In this case, the Monarch's wars do not affect you anymore.

If you are already at war with some nation, either due to the Monarch's actions, or your own, the crown may offer you some cheap **Mercenaries**. If you agree to their price, these units will appear at the docks in your Home Port, ready to set sail for the New World.

# Chapter 7

## Units

Several dozen different units are available in FreeCol, but not all units are available to all players. Some units are available only to **Indian Players**, some units are only available to **European Players**, and other units are available only to the **Royal Expeditionary Force**.

The most basic unit of the European Players (including you) is the **Free Colonist**. The Free Colonist is quite good at any task, but has no special skills. At the beginning of the game, many of the colonists will not be volunteers, but **Indentured Servant**, or **Petty Criminal**, who are deported to the New World. Indentured Servants are pretty bad at all jobs within the colony, but just like Free Colonists, they can be sent to native villages to learn a skill from the natives. Petty Criminals are very bad at all jobs within the colony and can not learn anything from the natives. However, both Indentured Servants and Petty Criminals can become Free Colonists through **Education**.

Many early colonies failed due to a lack of food. In order to avoid a similar fate, you must ensure adequate food production from the very beginning. All your colonists can produce some amount of food, especially on the more fertile terrain types, but the **Expert Farmer** and the **Expert Fisherman** will greatly increase your food production. But note that the Expert Fisherman requires a **Dock** to moor his boat to, and that this requires at least one ocean tile adjacent to your colony.

Four types of units are not available in Europe because they possess skills that can only be learned from the native population. These are the **Master Sugar Planter**, the **Master Cotton Planter**, the **Master Tobacco Planter**, and the **Expert Fur Trapper**. These units are able to

greatly increase your production of **Sugar**, **Cotton**, **Tobacco**, and **Furs**, respectively.

In the beginning of the game, you will most likely export a great deal of these goods to Europe, but beware, prices will drop! However, all the raw materials of the New World can be used to produce luxury goods that will sell for higher prices in Europe. **Sugar** can be used to distill **Rum**, **Cotton** can be used to produce **Cloth**, **Cigars** are made from **Tobacco**, and **Coats** are made from **Furs**. All your colonists can do this, but the **Master Distiller**, the **Master Weaver**, the **Master Tobacconist**, and the **Master Fur Trader** are the experts who will really rev up your production.

The New World also has two mineral resources, **Ore** and **Silver**, to offer. Again, all your colonists are able to mine these resources to a certain extent, but you will need the **Expert Ore Miner** and the **Expert SilverMiner** to make the most of them.

**Lumber** can be produced in all forested tiles, and can also be exported to Europe, although prices are low. However, you will need vast amounts of lumber in order to upgrade your colonies, and no colonist is more skilled at cutting down forests than the **Expert LumberJack**. Nor is any colonist more skilled at turning the lumber into buildings than the **Master Carpenter**.

The more advanced buildings you can construct in the your colonies require not only lumber but also **Tools**, which are produced from **Ore**. This is the job the **Master Blacksmith** excels in. Tools are also used by your **Pioneer** to clear forests and plow fields, but none of your other colonists can match the outdoors skills of your **Hardy Pioneer**. And finally, Tools are required for the production of **Muskets**, a demanding task best left to the **Master Gunsmith**.

All your units are able to explore the New World, but the colonist most suited to this dangerous endeavour is the **Scout**, a mounted colonist. A Scout may become a **Seasoned Scout** through **experience**, either by visiting native settlements, or by investigating **Lost City Rumours**. The Seasoned Scout is much more skillful at these jobs, but beware, they are dangerous!

Another colonist able to visit native settlements is the **Missionary**. Any colonist can be converted to a Missionary by blessing him in a colony with a **Church**, or in the **Home Port**, which is sure to have several churches and maybe even a **Cathedral**. Missionaries are able to establish a **Mission** in the native settlement, and to convert the natives. The **Jesuit Missionary**, however, is much more accomplished at the job.



The converted natives may join your colonies as **Indian Convert**. They are unskilled at all jobs within the colony, but more skilled than your Free Colonists at all outdoor jobs. Indian Converts can not be upgraded through **Education**, but they become Free Colonists as soon as **Bartolomé de las Casas** joins the **Continental Congress**.

Many colonists come to the New World in search of religious freedom. Thus, they desire a **Church** in which to preach and pray. This religious freedom, which attracts more European colonists, is represented by **Crosses**. Naturally, some colonists are more eloquent and inspired than others, and the most famous of these are known as **Firebrand Preacher**.

While the preachers are concerned with the spiritual welfare of the colonists, the colonists concerned with the secular welfare of their fellow citizens meet in the **Town Hall**, which generates **Liberty Bells**. The most dignified and influential of these citizens are considered **Elder Statesman**.

Any colonist can be equipped with **Muskets**, which makes him a **Soldier**, or a **Dragoon** if he is mounted. However, combat-hardened **Veteran Soldier** and **Veteran Dragoon** are much more effective. A dragoon that is beaten in battle is downgraded to a soldier. A beaten soldier becomes an unarmed colonist.

On the other hand, any soldier or dragoon that wins a battle may be upgraded. A Petty Criminal will be upgraded to an Indentured Servant, an Indentured Servant will be upgraded to a Free Colonist, and a Free Colonist to a veteran unit. Veteran units may be further upgraded to **Colonial Regular** or **Colonial Cavalry**, but only after the **Declaration of Independence**.

**Artillery** is most effective at attacking and defending colonies and fortified units, but is also very vulnerable in the open. Artillery may become damaged, which decreases its efficiency. **Damaged Artillery** is still quite powerful, but it can not be repaired, and further damage will destroy it.

The **Wagon Train**, which has to be built in one of your colonies, can be used to transport up to 200 units of goods over land and to trade with native settlements, and foreign colonies if **Jan de Witt** has joined the **Continental Congress**.

The **Treasure Train** is similar to the Wagon Train, but is used only to transport treasures. You can find these treasures in **Lost Cities**, or in the ruins of native settlements you have destroyed. If you move your Treasure Trains into a colony with access to the sea, your **Monarch** will offer to ship it to Europe for a “reasonable fee”, unless **Hernán Cortés** has joined the **Continental Congress**, in which case it will be shipped free of charge. If you

have a **Galleon**, however, you can take the Treasure Train to Europe yourself.

The **Caravel**, the **Merchantman** and the **Galleon** are unarmed naval units, with two, four or six cargo holds, respectively. A cargo hold may contain up to 100 units of goods, or any land unit except the Treasure Train, which takes up six cargo holds all by itself, and the Wagon Train, which can not be transported by sea at all.

The **Privateer** and the **Frigate** are armed naval vessel with two or four cargo holds, respectively. The Privateer is unique in that it does not fly the flag of your country and can attack the vessels of other countries with impunity. It becomes even more deadly when **Francis Drake** joins the **Continental Congress**.

The **Man of War** is the most powerful naval vessel, and has six cargo holds. At the beginning of the game, only the **Monarch** has these powerful ships, but when you gain independence you can also construct them in your colonies.

The Monarch has two types of units that you can never command, however. These are the **King's Regular** and **King's Cavalry**, which are roughly as powerful as your **Colonial Regulars** and **Colonial Cavalry**.

The natives also have two types of units that you can not recruit, namely the **Indian Brave** and the **Indian Dragoon**. These are strong fighting units that can also carry up to 100 units of goods each.

## 7.1 Equipment

Most units can be equipped with tools, horses, muskets, or a bible. This equipment grants them certain abilities, which they do not possess without that equipment. Certain units are particularly skilled with that equipment, but without it they have no special abilities:

- Only a unit equipped with tools is able to build roads, plow fields and cut down forests. Even the Hardy Pioneer is unable to do so without suitable equipment.
- Only a unit equipped with horses is able to scout Indian settlements and foreign colonies. Even the Seasoned Scout can't do that without being mounted.

- Only a unit equipped with muskets is a soldier. Veteran Soldiers are more effective than other units when equipped with muskets, but without muskets they have no advantage.
- Only a unit equipped with a bible is commissioned as a missionary and able to establish a mission in an Indian settlement. Even the Jesuit Missionary is unable to do so without a bible. If a Jesuit Missionary is equipped with tools, muskets or horses, he loses his bible. If that happens, the Jesuit Missionary carries his hat, rather than his bible in his hand.

Of course, units that do not represent people, such as ships, wagon trains and treasure trains, can not be equipped. The Indian Convert is another unit that can not be equipped.

## 7.2 Skills and Education

In FreeCol, your colonists come from all walks of life. Some are unskilled **Petty Criminals**, who are deported to the colonies. Others are **Indentured Servants**, or **Free Colonists** with moderate skills. Still others are masters of their craft, experts at their trade or profession, who were educated at the Royal College in Europe. If you have enough gold, you can recruit units directly from the Royal College.

Not all skills, however, can be learned in Europe. **Sugar**, **Cotton** and **Tobacco**, as well as **Furs** are apparently unknown in Europe. Thus, **Master Sugar Planters**, **Master Cotton Planters**, **Master Tobacco Planters**, as well as the **Expert Fur Trappers**, can not be recruited in Europe.

At the beginning of the game, these skills can only be learned at Indian Settlements, or through experience. If you put a Free Colonist to work outside of the colony for a long time without changing his work assignment, he may learn the necessary skill and become an expert. This does not work for the more complicated jobs within the colony, however.

The **Schoolhouse** and its upgrades, the **College** and the **University**, allow you to train your units yourself by placing a skilled unit in one of these buildings. If a suitable student exists in the colony it will automatically appear below the teacher in the building, as well as continuing to perform its current task. Note that the Master Sugar Planter, the Master Cotton Planter, the Master Tobacco Planter, the Expert Fur Trapper, the Master Distiller,

the Master Weaver, the Master Tobacconist, the Master Blacksmith and the Master Gunsmith all require at least a **College**, while the Elder Statesman, the Firebrand Preacher and the Jesuit Missionary even require a **University** to teach their profession.

A Free Colonist can learn any skill or profession in this manner, but Petty Criminals and Indentured Servants can not. However, a Petty Criminal may become an Indentured Servant, and an Indentured Servant may become a Free Colonist through education. Any colonist placed in a schoolhouse, college or university is able to provide this kind of education.

Petty Criminals may also become Indentured Servants, and Indentured Servants may also become Free Colonists by winning a battle and being **promoted**. Free Colonists can be promoted to Veteran Soldiers, and after the Declaration of Independence, these may be promoted to Colonial Regulars.

Indian units are more productive than free colonists when working outside of the colony, and less productive when working inside a building. Indian units can not become free colonists through education, but all Indian units become free colonists as soon as **Bartolomé de las Casas** joins the **Continental Congress**.

**Scouts** can explore the New World and enter Indian Settlements in order to speak with the tribal chiefs. A scout entering an Indian Settlement may become a **Seasoned Scout** through experience. A colonist investigating a **Lost City Rumours** may also be upgraded to a Seasoned Scout, unless that unit already has another skill.

## 7.3 Combat

A tile can only be occupied by units of a single Player. If a unit of another Player attempts to enter that tile, combat ensues. The combat mechanism of FreeCol is very simple: Each unit has an attack strength and a defence strength. Attack bonuses and defence bonuses granted by terrain, fortifications or **Founding Fathers** are added to the base values of the units. If the attack value of the attacker is greater than the defence value of the defender, the attacker wins. Otherwise the defender wins. If a tile is occupied by more than one unit, the attacker will fight against the defender with the strongest defence.

Most units that win a battle may be promoted, and all units that lose a battle will always be captured, demoted, damaged or destroyed. A **Petty**

**Criminal** may be promoted to an **Indentured Servant**, and an Indentured Servant may be promoted to a **Free Colonist**. A Free Colonist may be promoted to a **Veteran Soldier**, which in turn may be promoted to a **Colonial Regular**, but only after the **Declaration of Independence**.

A Dragoon that loses a battle will be demoted to a Soldier, and a Soldier that loses a battle will be demoted to an unarmed colonist. An unarmed colonist that loses a battle is either captured, if the attacker is a European Player, or slaughtered, if the attacker is a Native Player. **Wagon Trains** and **Treasure Trains** may also be captured by a European Player and destroyed by a Native Player. Native units that lose a battle are always slaughtered.

**Naval units** and **Artillery** can not be promoted. A beaten artillery unit becomes a **Damaged Artillery**, which can not be repaired and will be destroyed if it loses another battle. Ships are either sunk or damaged when they lose a battle. In either case all units and cargo aboard the ship are lost, and the ship automatically returns to the nearest repair location. This may be one of your colonies with a **Drydock** or the **Home Port**.

The **Frigate**, the **Man of War** and the **Privateer** have the ability to capture the goods aboard an enemy ship they have bested in battle. Naturally, they can not take more cargo than their holds will allow.

Naval units can also attack colonies on coastal tiles, although their chance of success is not very high. And colonies with a **Fort** or **Fortress** will automatically fire at enemy ships on adjacent ocean tiles.

### 7.3.1 Combat Bonuses and Penalties

Bonuses and penalties for naval units:

- **Cargo Penalty**: for each unit of cargo, both the offensive and the defensive power of the unit are reduced by 12.5%.
- **Piracy Bonus**: after **Francis Drake** has joined the Continental Congress (see below), both the offensive and the defensive power of all your **Privateers** is increased by 50%.

Bonuses and penalties for land units:

- **Armed Bonus**: the offensive and defensive power of your units increases by two if they are armed. Native units and the units of the **Royal Expeditionary Force** are only granted half this bonus.

- Mounted Bonus: the offensive and defensive power of your units increases by one if they are mounted.
- Veteran Bonus: the offensive and defensive power of veteran units is increased by 50%.
- Attack Bonus: the offensive power of attacking units is increased by 50%.
- Movement Penalty: the offensive power of units with only two movement points left is reduced by 33% and the offensive power of units with only one movement point left is reduced by 66%.
- Ambush Bonus: the offensive power of native units is increased by the defence bonus of the defender's tile. Your units are granted the same bonus when attacking units of the Royal Expeditionary Force.
- Artillery Penalty: the offensive power of artillery attacking units not in a colony is reduced by 75%. The defensive power of artillery not in a colony is also reduced by 75%.
- Bombard Bonus: the offensive power of the units of the Royal Expeditionary Force is increased by 50% when attacking a colony.
- Fortified Bonus: the defensive power of fortified units is increased by 50%.
- Stockade Bonus: the defensive power of units in a colony with a **Stockade**, Fort or Fortress is increased by 100%, 150% and 200%, respectively.
- Artillery Bonus: the defensive power of artillery in a colony defending against an Indian raid is increased by 50%.
- Ambush Penalty: the defensive power of your units when defending against Indians, and of the units of the Royal Expeditionary Force when defending against your units is reduced by the defence bonus of the defender's tile.

## Chapter 8

# The Continental Congress

As the player generates **Liberty Bells**, **Founding Fathers** are elected to the **Continental Congress**. The Founding Fathers are historical figures who played a more or less important part in the conquest of the New World. Each Founding Father grants the player a new bonus or ability, or causes a certain event to occur, much like the “Wonders of the World” in the Civilization series. At the beginning of the game, you will need only a few Liberty Bells to elect a Founding Father to the Continental Congress, but as the game progresses this number may increase to many hundred Bells.

**Adam Smith** (1723–1790), better known as the Father of Modern Economics, penned several texts pertaining to Economic theory, including, “The Wealth of Nations” his most famous text. As soon as Adam Smith joins the Continental Congress, the player is allowed to build factories, which produce 1.5 units of manufactured goods for each unit of raw material consumed. **W**

**Jacob Fugger II** (1459–1525) was an extremely wealthy German merchant and banker who amassed a fortune with family partnerships and stock holdings in the mining industries. As soon as Jacob Fugger joins the Continental Congress, all **Boycotts** currently in effect are dropped. **W**

**Peter Minuit** (1580–1638) bought what later became known as Manhattan Island from Native Americans for about 60 Dutch guilders. He later colonized the Delaware Bay area as well. As soon as Peter Minuit is elected to the Continental Congress, the Indians no longer demand payment for their land. **W**

**Peter Stuyvesant** (1592–1672) was appointed Governor General of the New Netherlands, which, after a British invasion he could not stop, became New York. With the election of Peter Stuyvesant, the construction of **custom**

houses becomes possible. **W**

**Jan de Witt** (1625–1672) was a great Dutch statesmen. He represented the merchants and encouraged industry and commerce. He also negotiated several important treaties for the Dutch to end wars with England. As soon as Jan de Witt is a member of the Continental Congress, trade with foreign colonies becomes possible. **W**

**Ferdinand Magellan** (1480–1521) was one of the greatest explorers to navigate the globe. Magellan was first to circumnavigate the globe and cross the Pacific Ocean. Magellan's election to the Continental Congress increases the movement of all naval vessels by one, and the time to sail between Europe and the New World is reduced. **W**

**Francisco Vázquez de Coronado** (1510–1554) was the first European explorer to see the Grand Canyon. Though he never found the golden cities he searched for, his mapping of the area now called the Southwestern US was important to further exploration. As soon as Francisco de Coronado joins the Continental Congress, all existing colonies become visible on the map. **W**

**Hernando de Soto** (1496–1542) was the first European to explore Florida and the southeastern US. He also held a prominent role in conquests of Central America. If Hernando de Soto is a member of the Continental Congress, the exploration of **Lost City Rumours** always yields a positive result, and all land units have an extended sight radius. **W**

**Henry Hudson** (1565–1611) was an English navigator who explored and mapped a large area of the northeastern North American continent. Many waterways in that region are named in his honour. His original goal was to find the famed Northwest Passage. The election of Henry Hudson to the Continental Congress doubles the output of all **Fur Trappers**. **W**

**Robert La Salle** (1643–1687) was the first European to travel the length of the Mississippi river, while on a mission to set up numerous trading posts along its banks. He later claimed the whole basin as Louisiana in honor of the French King. Later, he explored several of the Great Lakes. If Robert La Salle is a member of the Continental Congress, all colonies gain a stockade as soon as their population reaches three colonists. **W**

**Hernán Cortés** (1485–1547) was a famed Spanish conquistador who overthrew the Aztec Empire and claimed Mexico for Spain. As soon as Hernán Cortés joins the Continental Congress, conquered native settlements always yield treasure (and in greater abundance) and the King's **galleons** transport it free of charge. **W**

**George Washington** (1732–1799) was the general who lead the colonial



army to victory over the British to gain independence for the colonies. This victory and his leadership led to his being named the new nation's first President. If George Washington is a member of the Continental Congress, any soldier or dragoon who wins a combat is automatically upgraded to the next possible level. **W**

**Paul Revere** (1734–1818) was the famed rider of colonial America who mounted his horse and rode through the countryside alerting colonists that British soldiers were coming. He was captured during the ride and later released when his captors believed they were in grave danger and their prisoner might slow them down. With Paul Revere a member of the Continental Congress, a colonist automatically takes up any stockpiled muskets and defends an otherwise undefended colony if it is attacked. **W**

**Francis Drake** (1542–1596) was a great English sea captain, the first Englishman to circumnavigate the globe and a hero in the fights against the Spanish Armada. The presence of Francis Drake in the Continental Congress increases the combat strength of all Privateers by 50%. **W**

**John Paul Jones** (1741–1792) was hailed as a great sea captain in America, and uttered the famous words "Sir, I have not yet begun to fight" while fighting the British at sea. He later watched his ship sink to the bottom of the ocean from the deck of a British vessel. As soon as John Paul Jones is elected to the Continental Congress, a **Frigate** is added to your colonial navy for free. **W**

**Thomas Jefferson** (1743–1826), a powerful voice of patriotism, was credited with writing the Declaration of Independence. He later became the 3rd President of the US. The election of Thomas Jefferson to the Continental Congress increases Liberty Bell production in colonies by 50%. **W**

**Pocahontas** (1595–1617) was a peacemaker between early Jamestown settlers and the Native Americans. She is credited with sending food and other supplies to starving colonists there during harsh times. She later converted to Christianity and married an Englishman. When Pocahontas joins the Continental Congress, all tension levels between you and natives are removed and Indian alarm is generated half as fast. **W**

**Thomas Paine** (1737–1809) inspired colonists with his pen at the urging of Benjamin Franklin. He published a pamphlet, "Common Sense", guiding the thoughts of patriots all over the colonies. The election of Thomas Paine to the Continental Congress increases Liberty Bell production in all your colonies by the value of the current **tax rate**. **W**

**Simón Bolívar** (1783–1830) is remembered as a great leader in the strug-

gle for South American independence from Spain. Bolívar freed what is now Venezuela and later became its first President. When Simón Bolívar joins the Continental Congress, the Sons of Liberty membership in all existing colonies is increased by 20%. **W**

**Benjamin Franklin** (1706–1790), a heavy contributor to the Declaration of Independence, was one of the voices of the Revolution. He traveled extensively between Europe and the colonies, and gained the support of the French in the war. As soon as Benjamin Franklin is elected to the Continental Congress, the King's foreign wars no longer have effect on relationships in the New World, and Europeans in the New World always offer peace in negotiations. **W**

**William Brewster** (1567–1644) was the Puritan leader of the Plymouth colony in New England. As soon as William Brewster joins the Continental Congress, criminals or indentured servants no longer appear on the docks and you can select which immigrant in the recruitment pool to move to the docks. **W**

**William Penn** (1644–1718), a close friend of the Duke of York, was granted the land that is mostly Pennsylvania, Delaware, and New Jersey. He governed the Quaker colony for several years to provide a haven to fellow Quakers. The election of William Penn increases cross production in all colonies by 50%. **W**

**Father Jean de Brébeuf** (1593–1649) befriended the Huron Indians and converted many to Christianity. He died at the hands of the Iroquois who had finally defeated their enemy, the Hurons. With Jean de Brebeuf a member of the Continental Congress, all missionaries function as experts. **W**

**Juan Ginés de Sepúlveda** (1781–1872) was a Spanish theologian who spoke out for the conquest of Indian lands and forced evangelization of the natives. The election of Juan de Sepulveda to the Continental Congress increases the chance that a subjugated Indian settlement will “convert” and join a colony. **W**

**Bartolomé de las Casas** (1474–1566) was a Catholic Priest who traveled the Indies converting Indians and chastising Spain for their treatment of the Natives. When Bartolomé de las Casas joins the Continental Congress, all existing Indian converts become free colonists. **W**

# Chapter 9

## The Birth of a Nation

### 9.1 Sons of Liberty

At the beginning of the game, all your colonists will be **Tory Loyalists**, who support your **Monarch** and are opposed to your policies. For this reason, colonies with more than a certain number of tories (which depends on the difficulty setting and defaults to four colonists) suffer a production penalty of one unit. If the limit is exceeded by four colonists, the penalty increases to two units and may well threaten the survival of the colony.

**Liberty Bells**, however, will turn these Tories into **Sons of Liberty**, who support your policies. Colonies in which more than 50% of the population are Sons of Liberty enjoy a production bonus of one unit, which is increased to two units as soon as 100% of the population become Sons of Liberty.

### 9.2 The Declaration of Independence

As soon as 50% of your entire population support the Sons of Liberty, you can declare the independence of your colonies. Your **Monarch** will not be amused and will send the **Royal Expeditionary Force** to quell the insurrection. In order to gain independence, you must defeat the Royal Expeditionary Force by capturing or destroying nearly all of their land forces and by taking back any colonies they might have captured. You do not need to destroy the fleet.

At the declaration, colonies with strong support for the Sons of Liberty sometimes promote veteran soldiers at work there to **Colonial Regular** in preparation for the coming war. In the future, the European enemies of

your Monarch may support your effort if you generate a sufficient number of Liberty Bells after the War of Independence has begun.

# Chapter 10

## Changing the Rules

We would like to make FreeCol configurable, so that the game engine becomes capable of emulating many similar games. For this purpose, we have made many of the game's features configurable.

At some point in the future, we will probably add a special rule set editor, but at the moment, your only option is to edit the file `specification.xml` directly. This file defines the abilities of units, founding fathers, buildings, terrain types, goods and equipment, for example. You can find this file in the *data/freecol* directory.

This is still work in progress, however, and the schema for the rule set certain to change again in the future. If you wish to develop your own rule set, you will have to monitor FreeCol development closely.

This having been said, we are particularly interested in hearing about problems caused by your changes to the rule set. Some dialogs might be unable to display more types of goods than are currently defined, for example. Or other dialogs might not recognize your new Minuteman unit as an armed unit. Please help us improve FreeCol by telling us about such problems.

If you have a working rule set that adds a new flavour to the game, we will gladly distribute it along with our default rule set. If you have ideas that can not currently be implemented, we will probably try to remove these limitations.

If you try to modify the rule set, you are strongly encouraged to check whether the result is still valid. You can do this by validating the result with the command `ant validate`.

## 10.1 Modifiers and Abilities

Most of the objects defined by the rule set can be customized via modifiers and abilities. Abilities are boolean values (“true” or “false”). If the value is not explicitly stated, it defaults to true. If an ability is not present, it defaults to false. Modifiers define a bonus or penalty to be applied to a numeric value, such as the number of goods produced by a unit. The modifier may be an additive, multiplicative or a percentage modifier. Modifiers default to “identity”, which means they have no effect.

The code also checks that all abilities and modifiers it uses are defined by the specification. Therefore, you must define all of them, even if you do not use them. You can do this by setting their value to the default value, e.g. “false” in the case of an ability, or “0” in the case of an additive modifier.

### **model.ability.addTaxToBells**

*Affects: Player*

*Provided by: Nation, Nation Type, Founding Father*

The player adds the current tax rate as a bonus to bells production. The bonus is modified every time the tax increases or decreases.

### **model.ability.alwaysOfferedPeace**

*Affects: Player*

*Provided by: Nation, Nation Type, Founding Father*

The player is always offered peace in negotiations with AI players.

### **model.ability.ambushBonus**

*Affects: Unit*

*Provided by: Nation, Nation Type, Founding Father, Unit Type, Equipment Type*

The unit is granted an ambush bonus equal to the terrain’s defence value.

### **model.ability.ambushPenalty**

*Affects: Unit*

*Provided by: Nation, Nation Type, Founding Father, Unit Type, Equipment Type*

The unit suffers an ambush penalty equal to the terrain’s defence value.

### **model.ability.autoProduction**

*Affects: Building*

*Provided by: Building Type*

The building needs no units to produce goods, and will never produce more goods than can be stored in the colony.

#### **model.ability.automaticEquipment**

*Affects: Unit*

*Provided by: Nation, Nation Type, Founding Father, Unit Type, Equipment Type*

The unit automatically picks up equipment if attacked.

#### **model.ability.automaticPromotion**

*Affects: Unit*

*Provided by: Nation, Nation Type, Founding Father, Unit Type, Equipment Type*

A unit that can be promoted will always be promoted when successful in battle.

#### **model.ability.betterForeignAffairsReport**

*Affects: Player*

*Provided by: Nation, Nation Type, Founding Father*

The player is provided with more information about foreign powers.

#### **model.ability.bombard**

*Affects: Unit*

*Provided by: Nation, Nation Type, Founding Father, Unit Type, Equipment Type*

The unit is able to bombard other units.

#### **model.ability.bombardShips**

*Affects: Building*

*Provided by: Building Type*

The building has the ability to bombard enemy ships on adjacent tiles.

#### **model.ability.bornInColony**

*Affects: Unit*

*Provided by: Nation, Nation Type, Founding Father, Unit Type, Equipment Type*

The unit can be born in a colony, provided that enough food is available.

**model.ability.bornInIndianSettlement**

*Affects: Unit*

*Provided by: Nation, Nation Type, Founding Father, Unit Type, Equipment Type*

The unit can be born in an Indian settlement, provided that enough food is available.

**model.ability.build**

*Affects: Building*

*Provided by: Building Type*

The building can build units or equipment.

**model.ability.buildCustomHouse**

*Affects: Player*

*Provided by: Nation, Nation Type, Founding Father*

The player can build custom houses.

**model.ability.buildFactory**

*Affects: Player*

*Provided by: Nation, Nation Type, Founding Father*

The player can build factories.

**model.ability.canBeCaptured**

*Affects: Unit*

*Provided by: Nation, Nation Type, Founding Father, Unit Type, Equipment Type*

The unit can be captured. Land units that can not be captured are destroyed, naval units that can not be captured are either sunk or damaged.

**model.ability.canBeEquipped**

*Affects: Unit*

*Provided by: Nation, Nation Type, Founding Father, Unit Type, Equipment Type*

The unit can be equipped.

**model.ability.canNotRecruitUnit**

*Affects: Player*



*Provided by: Nation, Nation Type, Founding Father*

The player can not recruit specified units.

**model.ability.captureEquipment**

*Affects: Unit*

*Provided by: Nation, Nation Type, Founding Father, Unit Type, Equipment Type*

The unit can capture equipment from another unit.

**model.ability.captureGoods**

*Affects: Unit*

*Provided by: Nation, Nation Type, Founding Father, Unit Type, Equipment Type*

The unit can capture goods from another unit.

**model.ability.captureUnits**

*Affects: Unit*

*Provided by: Nation, Nation Type, Founding Father, Unit Type, Equipment Type*

The unit can capture enemy units.

**model.ability.carryGoods**

*Affects: Unit*

*Provided by: Nation, Nation Type, Founding Father, Unit Type, Equipment Type*

The unit can transport goods.

**model.ability.carryTreasure**

*Affects: Unit*

*Provided by: Nation, Nation Type, Founding Father, Unit Type, Equipment Type*

The unit can transport treasures, not treasure trains.

**model.ability.carryUnits**

*Affects: Unit*

*Provided by: Nation, Nation Type, Founding Father, Unit Type, Equipment Type*

The unit can transport other units.

**model.ability.convert**

*Affects: Unit*

*Provided by: Nation, Nation Type, Founding Father, Unit Type, Equipment Type*

The unit is a native convert.

**model.ability.dressMissionary**

*Affects: Building*

*Provided by: Building Type*

The building can commission missionaries.

**model.ability.electFoundingFather**

*Affects: Player*

*Provided by: Nation, Nation Type, Founding Father*

The player can elect Founding Fathers.

**model.ability.expertMissionary**

*Affects: Unit*

*Provided by: Nation, Nation Type, Founding Father, Unit Type, Equipment Type*

The unit is an expert missionary, but not necessarily commissioned.

**model.ability.expertPioneer**

*Affects: Unit*

*Provided by: Nation, Nation Type, Founding Father, Unit Type, Equipment Type*

The unit is an expert pioneer, but not necessarily equipped with tools.

**model.ability.expertScout**

*Affects: Unit*

*Provided by: Nation, Nation Type, Founding Father, Unit Type, Equipment Type*

The unit is an expert scout, but not necessarily equipped with horses.

**model.ability.expertSoldier**

*Affects: Unit*

*Provided by: Nation, Nation Type, Founding Father, Unit Type, Equipment*

*Type*

The unit is an expert soldier, but not necessarily equipped with muskets.

**model.ability.expertsUseConnections**

*Affects: Player*

*Provided by: Nation, Nation Type, Founding Father*

Experts working in factories can produce a small amount of goods even if the raw materials are not available in the colony.

**model.ability.export**

*Affects: Building*

*Provided by: Building Type*

The building can export goods to Europe directly.

**model.ability.foundColony**

*Affects: Unit*

*Provided by: Nation, Nation Type, Founding Father, Unit Type, Equipment Type*

The unit can found new colonies.

**model.ability.foundInLostCity**

*Affects: Unit*

*Provided by: Nation, Nation Type, Founding Father, Unit Type, Equipment Type*

The unit may be generated as the result of exploring a Lost City Rumour.

**model.ability.hasPort**

*Affects: Colony*

*Provided by: Map*

The colony has access to at least one water tile. This ability can not be set by the specification, but it can be used as a required ability.

**model.ability.ignoreEuropeanWars**

*Affects: Player*

*Provided by: Nation, Nation Type, Founding Father*

The player will not be affected by the Monarch's declarations of war.

**model.ability.improveTerrain**

*Affects: Unit*

*Provided by: Nation, Nation Type, Founding Father, Unit Type, Equipment Type*

The unit is able to improve terrain.

### **model.ability.independenceDeclared**

*Affects: Player*

*Provided by: Nation, Nation Type, Founding Father*

The player has declared independence.

### **model.ability.mercenaryUnit**

*Affects: Unit*

*Provided by: Nation, Nation Type, Founding Father, Unit Type, Equipment Type*

The unit may be offered as a mercenary unit.

### **model.ability.missionary**

*Affects: Unit*

*Provided by: Nation, Nation Type, Founding Father, Unit Type, Equipment Type*

The unit is able to establish missions and incite unrest in native settlements.

### **model.ability.moveToEurope**

*Affects: Tile*

*Provided by: Tile Type*

Units on the tile are able to move to Europe.

### **model.ability.multipleAttacks**

*Affects: Unit*

*Provided by: Nation, Nation Type, Founding Father, Unit Type, Equipment Type*

The unit can attack more than once.

### **model.ability.native**

*Affects: Unit*

*Provided by: Nation, Nation Type, Founding Father, Unit Type, Equipment Type*

The unit is a native unit.

**model.ability.navalUnit**

*Affects: Unit*

*Provided by: Nation, Nation Type, Founding Father, Unit Type, Equipment Type*

The unit is a naval unit.

**model.ability.pillageUnprotectedColony**

*Affects: Unit*

*Provided by: Nation, Nation Type, Founding Father, Unit Type, Equipment Type*

The unit is able to steal goods from and destroy buildings in an unprotected colony.

**model.ability.piracy**

*Affects: Unit*

*Provided by: Nation, Nation Type, Founding Father, Unit Type, Equipment Type*

The unit is a privateer.

**model.ability.produceInWater**

*Affects: Building*

*Provided by: Building Type*

The building enables units to produce on water tiles.

**model.ability.refUnit**

*Affects: Unit*

*Provided by: Nation, Nation Type, Founding Father, Unit Type, Equipment Type*

The unit can be part of the Royal Expeditionary Force.

**model.ability.repairUnits**

*Affects: Building*

*Provided by: Building Type*

The building can repair units.

**model.ability.royalExpeditionaryForce**

*Affects: Player*

*Provided by: Nation, Nation Type, Founding Father*

The player is a Royal Expeditionary Force.

**model.ability.rumoursAlwaysPositive**

*Affects: Player*

*Provided by: Nation, Nation Type, Founding Father*

The player will always get positive results from exploring Lost City Rumours.

**model.ability.scoutForeignColony**

*Affects: Unit*

*Provided by: Nation, Nation Type, Founding Father, Unit Type, Equipment Type*

The unit can scout out foreign colonies.

**model.ability.scoutIndianSettlement**

*Affects: Unit*

*Provided by: Nation, Nation Type, Founding Father, Unit Type, Equipment Type*

The unit can scout out native settlements.

**model.ability.selectRecruit**

*Affects: Player*

*Provided by: Nation, Nation Type, Founding Father*

The player can select a unit to recruit in Europe. This also applies to units generated as a result of finding a Fountain of Youth.

**model.ability.teach**

*Affects: Building*

*Provided by: Building Type*

The building enables experts to teach other units. However, the building may place limits on the experience level of teachers.

**model.ability.tradeWithForeignColonies**

*Affects: Player*

*Provided by: Nation, Nation Type, Founding Father*

The player may trade goods in foreign colonies.

**model.ability.undead**

*Affects: Unit*

*Provided by: Nation, Nation Type, Founding Father, Unit Type, Equipment Type*

The unit is an undead unit (used only in revenge mode).

#### **model.modifier.bombardBonus**

*Affects: Player*

*Provided by: Nation, Nation Type, Founding Father*

The player's units are granted a bombard bonus when attacking.

#### **model.modifier.buildingPriceBonus**

*Affects: Player*

*Provided by: Nation, Nation Type, Founding Father*

The player can build or buy buildings at a reduced price.

#### **model.modifier.defence**

*Affects: Unit*

*Provided by: Nation, Nation Type, Founding Father, Unit Type, Equipment Type*

The unit has a defence bonus or penalty.

#### **model.modifier.landPaymentModifier**

*Affects: Player*

*Provided by: Nation, Nation Type, Founding Father*

The player can buy Indian land at a reduced price.

#### **model.modifier.lineOfSightBonus**

*Affects: Unit*

*Provided by: Nation, Nation Type, Founding Father, Unit Type, Equipment Type*

The unit has an increased line of sight.

#### **model.modifier.minimumColonySize**

*Affects: Colony*

*Provided by: Building Type, Nation, Nation Type, Founding Father*

The population of the colony can not be voluntarily reduced below this number. The modifier does not in any way affect a population reduction due

to starvation or other events.

**model.modifier.movementBonus**

*Affects: Unit*

*Provided by: Nation, Nation Type, Founding Father, Unit Type, Equipment Type*

The unit has an increased movement range.

**model.modifier.nativeAlarmModifier**

*Affects: Player*

*Provided by: Nation, Nation Type, Founding Father*

The player generates less native alarm.

**model.modifier.nativeConvertBonus**

*Affects: Player*

*Provided by: Nation, Nation Type, Founding Father*

The player has a greater chance of converting natives.

**model.modifier.nativeTreasureModifier**

*Affects: Player*

*Provided by: Nation, Nation Type, Founding Father*

The player generates greater treasures when destroying native settlements.

**model.modifier.offence**

*Affects: Unit*

*Provided by: Nation, Nation Type, Founding Father, Unit Type, Equipment Type*

The unit has an offence bonus or penalty.

**model.modifier.religiousUnrestBonus**

*Affects: Player*

*Provided by: Nation, Nation Type, Founding Father*

The player generates greater religious unrest in Europe.

**model.modifier.sailHighSeas**

*Affects: Unit*

*Provided by: Nation, Nation Type, Founding Father, Unit Type, Equipment Type*



The unit's travel time between Europe and the New World is reduced.

**model.modifier.tradeBonus**

*Affects: Player*

*Provided by: Nation, Nation Type, Founding Father*

Prices in the player's market remain stable for longer.

**model.modifier.treasureTransportFee**

*Affects: Player*

*Provided by: Nation, Nation Type, Founding Father*

The player pays a smaller fee for transporting treasures to Europe.

**model.modifier.warehouseStorage**

*Affects: Building*

*Provided by: Building Type*

The building increases the capacity of the warehouse.



# Chapter 11

## Known bugs

FreeCol is still alpha software. In plain English, this means that it is full of bugs. Some of these bugs have already been reported, but have not been fixed yet. You can find a list of these bugs, and report new bugs by using our [SourceForge bug tracker](#).

Even in single player mode, FreeCol is a client-server game. The communication between client and server can fall out of step. If this happens, the server often tries to recover by requesting a reconnect. If this occurs, please accept in order to continue playing. In some cases, the game may come to a halt during the turn of a computer opponent. If this happens to you, you can generally reconnect to the server by using the reconnect option in the [game menu](#) or by pressing `ctrl-r`.



# Chapter 12

## Copyright Notice

Copyright ©2008 [The FreeCol Team](#).

This manual is free software; you may redistribute it and/or modify it under the terms of the GNU General Public License as published by the Free Software Foundation; either version 2, or (at your option) any later version.

This is distributed in the hope that it will be useful, but without any warranty; without even the implied warranty of merchantability or fitness for a particular purpose. See the GNU General Public License for more details.

A copy of the GNU General Public License is available on the World Wide Web at [the GNU General Public Licence](#). You can also obtain it by writing to the Free Software Foundation, Inc., 59 Temple Place - Suite 330, Boston, MA 02111-1307, USA.

Furthermore, permission is granted to copy, distribute and/or modify this file under the terms of the GNU Free Documentation License, Version 1.2 or any later version published by the Free Software Foundation; with no Invariant Sections, no Front-Cover Texts, and no Back-Cover Texts.

Furthermore, permission is granted to copy, distribute and/or modify this file under the terms of the Creative Commons Attributive Share-Alike license (CC-BY-SA).

# Index

## Ability

- model.ability.addTaxToBells, 68
- model.ability.alwaysOfferedPeace, 68
- model.ability.ambushBonus, 68
- model.ability.ambushPenalty, 68
- model.ability.automaticEquipment, 69
- model.ability.automaticPromotion, 69
- model.ability.autoProduction, 68
- model.ability.betterForeignAffairsReport, 69
- model.ability.bombard, 69
- model.ability.bombardShips, 69
- model.ability.bornInColony, 69
- model.ability.bornInIndianSettlement, 70
- model.ability.build, 70
- model.ability.buildCustomHouse, 70
- model.ability.buildFactory, 70
- model.ability.canBeCaptured, 70
- model.ability.canBeEquipped, 70
- model.ability.canNotRecruitUnit, 70
- model.ability.captureEquipment, 71
- model.ability.captureGoods, 71
- model.ability.captureUnits, 71
- model.ability.carryGoods, 71
- model.ability.carryTreasure, 71
- model.ability.carryUnits, 71
- model.ability.convert, 72
- model.ability.dressMissionary, 72
- model.ability.electFoundingFather, 72
- model.ability.expertMissionary, 72
- model.ability.expertPioneer, 72
- model.ability.expertScout, 72
- model.ability.expertSoldier, 72
- model.ability.expertsUseConnections, 73
- model.ability.export, 73
- model.ability.foundColony, 73
- model.ability.foundInLostCity, 73
- model.ability.hasPort, 73
- model.ability.ignoreEuropeanWars, 73
- model.ability.improveTerrain, 73
- model.ability.independenceDeclared, 74
- model.ability.mercenaryUnit, 74
- model.ability.missionary, 74
- model.ability.moveToEurope, 74
- model.ability.multipleAttacks, 74
- model.ability.native, 74

- model.ability.navalUnit, 75
- model.ability.pillageUnprotectedColony, 75
- model.ability.piracy, 75
- model.ability.produceInWater, 75
- model.ability.refUnit, 75
- model.ability.repairUnits, 75
- model.ability.royalExpeditionaryForce, 75
- model.ability.rumoursAlwaysPositive, 76
- model.ability.scoutForeignColony, 76
- model.ability.scoutIndianSettlement, 76
- model.ability.selectRecruit, 76
- model.ability.teach, 76
- model.ability.tradeWithForeignColonies, 76
- model.ability.undead, 76
- Adam Smith, 61
- Arctic, 38
- Armory, 47
- Arsenal, 47
- Artillery, 55
- Bartolomé de las Casas, 64
- Benjamin Franklin, 64
- Blacksmith's House, 46
- Blacksmith's Workshop, 46
- Boreal Forest, 37
- Boston Tea Party, 51
- Boycotts, 51
- Broadleaf Forest, 38
- Buildings
  - Armory, 47
  - Arsenal, 47
  - Blacksmith's House, 46
  - Blacksmith's Workshop, 46
  - Carpenter's House, 45
  - Cathedral, 46
  - Chapel, 46
  - Church, 46
  - Cigar Factory, 46
  - College, 47
  - Custom House, 48
  - Depot, 46
  - Distiller's House, 46
  - Dock, 47
  - Drydock, 47
  - Fort, 47
  - Fortress, 47
  - Fur Factory, 46
  - Fur Trader's House, 46
  - Fur Trader's Post, 46
  - Iron Works, 46
  - Magazine, 47
  - Newspaper, 47
  - Pasture, 47
  - Printing Press, 47
  - Rum Distillery, 46
  - Rum Factory, 46
  - Schoolhouse, 47
  - Shipyard, 47
  - Stables, 47
  - Stockade, 47
  - Textile Mill, 46
  - Tobacconist's House, 46
  - Tobacconist's Shop, 46
  - Town Hall, 45
  - University, 47
  - Warehouse, 46
  - Warehouse Expansion, 46
  - Weaver's House, 46
  - Weaver's Shop, 46

- Caravel, 56  
Carpenter's House, 45  
Cathedral, 46  
Chapel, 46  
Church, 46  
Cigar Factory, 46  
Cigars, 39  
Cloth, 39  
Coats, 39  
College, 47  
Colonial Cavalry, 55  
Colonial Regular, 55  
Colony Advisor, 23  
Conifer Forest, 38  
Continental Congress Advisor, 23  
Cotton, 39  
Crosses, 39  
Custom House, 48  
  
Damaged Artillery, 55  
Denmark, 49  
Depot, 46  
Desert, 37  
Distiller's House, 46  
Dock, 47  
Dragoon, 55  
Drydock, 47  
dump cargo, 22  
Dutch, 49  
  
Elder Statesman, 55  
England, 49  
Expert Farmer, 53  
Expert Fisherman, 53  
Expert Fur Trapper, 53  
Expert LumberJack, 54  
Expert Ore Miner, 54  
Expert SilverMiner, 54  
  
Exploration Report, 24  
  
Father Jean de Brébeuf, 64  
Ferdinand Magellan, 62  
Firebrand Preacher, 55  
Fish, 38  
Food, 38  
Foreign Affairs Advisor, 23  
Fort, 47  
Fortress, 47  
Founding Fathers  
    Adam Smith, 61  
    Bartolomé de las Casas, 64  
    Benjamin Franklin, 64  
    Father Jean de Brébeuf, 64  
    Ferdinand Magellan, 62  
    Francis Drake, 63  
    Francisco Vázquez de Coronado, 62  
    George Washington, 62  
    Henry Hudson, 62  
    Hernán Cortés, 62  
    Hernando de Soto, 62  
    Jacob Fugger II, 61  
    Jan de Witt, 62  
    John Paul Jones, 63  
    Juan Ginés de Sepúlveda, 64  
    Paul Revere, 63  
    Peter Minuit, 61  
    Peter Stuyvesant, 61  
    Pocahontas, 63  
    Robert La Salle, 62  
    Simón Bolívar, 63  
    Thomas Jefferson, 63  
    Thomas Paine, 63  
    William Brewster, 64  
    William Penn, 64  
Fountain of Youth, 42



- France, 49  
Francis Drake, 63  
Francisco Vázquez de Coronado, 62  
Free Colonist, 53  
Frigate, 56  
Fur Factory, 46  
Fur Trader's House, 46  
Fur Trader's Post, 46  
Furs, 39
- Galleon, 56  
George Washington, 62  
Goods  
    Cigars, 39  
    Cloth, 39  
    Coats, 39  
    Cotton, 39  
    Crosses, 39  
    Fish, 38  
    Food, 38  
    Furs, 39  
    Grain, 38  
    Hammers, 39  
    Horses, 38  
    Liberty Bells, 39  
    Lumber, 39  
    Muskets, 39  
    Ore, 39  
    Rum, 39  
    Silver, 39  
    Sugar, 39  
    Tobacco, 39  
    Tools, 39  
    Trade Goods, 39  
Grain, 38  
Grassland, 37  
Hammers, 39  
Hardy Pioneer, 54  
Henry Hudson, 62  
Hernán Cortés, 62  
Hernando de Soto, 62  
High Seas, 37  
Hills, 38  
History Report, 24  
Horses, 38
- Indentured Servant, 53  
Indian Advisor, 23  
Indian Brave, 56  
Indian Convert, 55  
Indian Dragoon, 56  
IP address, 13  
Iron Works, 46
- Jacob Fugger II, 61  
Jan de Witt, 62  
Jesuit Missionary, 54  
John Paul Jones, 63  
Juan Ginés de Sepúlveda, 64
- King's Cavalry, 56  
King's Regular, 56
- Labour Advisor, 22  
language, 15  
Liberty Bells, 39  
Lost Cities, 42  
Lumber, 39
- Magazine, 47  
Man of War, 56  
Marsh, 37  
Master Blacksmith, 54  
Master Carpenter, 54  
Master Cotton Planter, 53  
Master Distiller, 54

- Master Fur Trader, 54
- Master Gunsmith, 54
- Master Sugar Planter, 53
- Master Tobacco Planter, 53
- Master Tobacconist, 54
- Master Weaver, 54
- Mercenaries, 52
- Merchantman, 56
- meta.freecol.org, 13
- Military Advisor, 23
- Mission, 41
- Missionary, 54
- Mixed Forest, 38
- model.ability.addTaxToBells, 68
- model.ability.alwaysOfferedPeace, 68
- model.ability.ambushBonus, 68
- model.ability.ambushPenalty, 68
- model.ability.automaticEquipment, 69
- model.ability.automaticPromotion, 69
- model.ability.autoProduction, 68
- model.ability.betterForeignAffairsReport, 69
- model.ability.bombard, 69
- model.ability.bombardShips, 69
- model.ability.bornInColony, 69
- model.ability.bornInIndianSettlement, 70
- model.ability.build, 70
- model.ability.buildCustomHouse, 70
- model.ability.buildFactory, 70
- model.ability.canBeCaptured, 70
- model.ability.canBeEquipped, 70
- model.ability.canNotRecruitUnit, 70
- model.ability.captureEquipment, 71
- model.ability.captureGoods, 71
- model.ability.captureUnits, 71
- model.ability.carryGoods, 71
- model.ability.carryTreasure, 71
- model.ability.carryUnits, 71
- model.ability.convert, 72
- model.ability.dressMissionary, 72
- model.ability.electFoundingFather, 72
- model.ability.expertMissionary, 72
- model.ability.expertPioneer, 72
- model.ability.expertScout, 72
- model.ability.expertSoldier, 72
- model.ability.expertsUseConnections, 73
- model.ability.export, 73
- model.ability.foundColony, 73
- model.ability.foundInLostCity, 73
- model.ability.hasPort, 73
- model.ability.ignoreEuropeanWars, 73
- model.ability.improveTerrain, 73
- model.ability.independenceDeclared, 74
- model.ability.mercenaryUnit, 74
- model.ability.missionary, 74
- model.ability.moveToEurope, 74
- model.ability.multipleAttacks, 74
- model.ability.native, 74
- model.ability.navalUnit, 75
- model.ability.pillageUnprotectedColony, 75
- model.ability.piracy, 75
- model.ability.produceInWater, 75
- model.ability.refUnit, 75
- model.ability.repairUnits, 75
- model.ability.royalExpeditionaryForce, 75
- model.ability.rumoursAlwaysPositive, 76
- model.ability.scoutForeignColony, 76

- model.ability.scoutIndianSettlement, 76
- model.ability.selectRecruit, 76
- model.ability.teach, 76
- model.ability.tradeWithForeignColonies, 76
- model.ability.undead, 76
- model.modifier.bombardBonus, 77
- model.modifier.buildingPriceBonus, 77
- model.modifier.defence, 77
- model.modifier.landPaymentModifier, 77
- model.modifier.lineOfSightBonus, 77
- model.modifier.minimumColonySize, 77
- model.modifier.movementBonus, 78
- model.modifier.nativeAlarmModifier, 78
- model.modifier.nativeConvertBonus, 78
- model.modifier.nativeTreasureModifier, 78
- model.modifier.offence, 78
- model.modifier.religiousUnrestBonus, 78
- model.modifier.sailHighSeas, 78
- model.modifier.tradeBonus, 79
- model.modifier.treasureTransportFee, 79
- model.modifier.warehouseStorage, 79
- Modifier
  - model.modifier.bombardBonus, 77
  - model.modifier.buildingPriceBonus, 77
  - model.modifier.defence, 77
  - model.modifier.landPaymentModifier, 77
  - model.modifier.lineOfSightBonus, 77
  - model.modifier.minimumColonySize, 77
  - model.modifier.movementBonus, 78
  - model.modifier.nativeAlarmModifier, 78
  - model.modifier.nativeConvertBonus, 78
  - model.modifier.nativeTreasureModifier, 78
  - model.modifier.offence, 78
  - model.modifier.religiousUnrestBonus, 78
  - model.modifier.sailHighSeas, 78
  - model.modifier.tradeBonus, 79
  - model.modifier.treasureTransportFee, 79
  - model.modifier.warehouseStorage, 79
- Mountains, 38
- multi-player game, 13
- Muskets, 39
- native2ascii, 10
- Naval Advisor, 23
- Netherlands, 49
- Newspaper, 47
- Ocean, 37
- Ore, 39
- Pasture, 47
- Paul Revere, 63
- personal firewall, 14
- Peter Minuit, 61
- Peter Stuyvesant, 61

- Petty Criminal, 53
- Pioneer, 54
- Plains, 37
- Pocahontas, 63
- Port 3540, 13
- Port 3541, 13
- Portugal, 49
- Prairie, 37
- Printing Press, 47
- Privateer, 56
  
- Rain Forest, 38
- Religious Advisor, 22
- Reports
  - Colony Advisor, 23
  - Continental Congress Advisor, 23
  - Exploration Report, 24
  - Foreign Affairs Advisor, 23
  - History Report, 24
  - Indian Advisor, 23
  - Labour Advisor, 22
  - Military Advisor, 23
  - Naval Advisor, 23
  - Religious Advisor, 22
  - Requirements Report, 23
  - Trade Advisor, 23
  - Turn Report, 23
- Requirements Report, 23
- Robert La Salle, 62
- Royal Expeditionary Force, 52
- Rum, 39
- Rum Distillery, 46
- Rum Factory, 46
- Russia, 49
  
- Savannah, 37
- Schoolhouse, 47
  
- Scout, 54
- Scrub Forest, 38
- Seasoned Scout, 54
- Shipyard, 47
- Silver, 39
- Simón Bolívar, 63
- Soldier, 55
- Spain, 49
- Stables, 47
- Stockade, 47
- Sugar, 39
- Swamp, 37
- Sweden, 49
  
- Taxes, 51
- Terrain
  - Arctic, 38
  - Boreal Forest, 37
  - Broadleaf Forest, 38
  - Conifer Forest, 38
  - Desert, 37
  - Grassland, 37
  - High Seas, 37
  - Hills, 38
  - Marsh, 37
  - Mixed Forest, 38
  - Mountains, 38
  - Ocean, 37
  - Plains, 37
  - Prairie, 37
  - Rain Forest, 38
  - Savannah, 37
  - Scrub Forest, 38
  - Swamp, 37
  - Tropical Forest, 38
  - Tundra, 37
  - Wetland Forest, 38
- Textile Mill, 46

Thomas Jefferson, 63  
Thomas Paine, 63  
Tobacco, 39  
Tobacconist's House, 46  
Tobacconist's Shop, 46  
Tools, 39  
Town Hall, 45  
Trade Advisor, 23  
Trade Goods, 39  
Treasure Train, 55  
Tropical Forest, 38  
Tundra, 37  
Turn Report, 23  
unit movement, 27  
Units  
    Artillery, 55  
    Caravel, 56  
    Colonial Cavalry, 55  
    Colonial Regular, 55  
    Damaged Artillery, 55  
    Dragoon, 55  
    Elder Statesman, 55  
    Expert Farmer, 53  
    Expert Fisherman, 53  
    Expert Fur Trapper, 53  
    Expert LumberJack, 54  
    Expert Ore Miner, 54  
    Expert SilverMiner, 54  
    Firebrand Preacher, 55  
    Free Colonist, 53  
    Frigate, 56  
    Galleon, 56  
    Hardy Pioneer, 54  
    Indentured Servant, 53  
    Indian Brave, 56  
    Indian Convert, 55  
    Indian Dragoon, 56

Jesuit Missionary, 54  
King's Cavalry, 56  
King's Regular, 56  
Man of War, 56  
Master Blacksmith, 54  
Master Carpenter, 54  
Master Cotton Planter, 53  
Master Distiller, 54  
Master Fur Trader, 54  
Master Gunsmith, 54  
Master Sugar Planter, 53  
Master Tobacco Planter, 53  
Master Tobacconist, 54  
Master Weaver, 54  
Merchantman, 56  
Missionary, 54  
Petty Criminal, 53  
Pioneer, 54  
Privateer, 56  
Scout, 54  
Seasoned Scout, 54  
Soldier, 55  
Treasure Train, 55  
Veteran Dragoon, 55  
Veteran Soldier, 55  
Wagon Train, 55  
University, 47  
  
Veteran Dragoon, 55  
Veteran Soldier, 55  
  
Wagon Train, 55  
Warehouse, 46  
Warehouse Expansion, 46  
Weaver's House, 46  
Weaver's Shop, 46  
Wetland Forest, 38  
William Brewster, 64

William Penn, 64